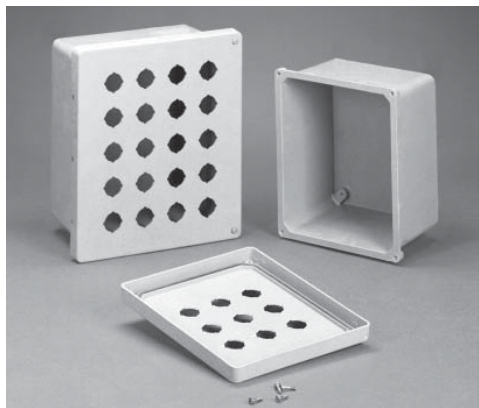


## Polyester Modular Enclosures - NEMA 4X

### PJ Series - Pushbutton Lift Off and Hinged Screw Cover 30.5mm



**Panel  
Sold  
Separately**



### Application

- Designed for use as instrument enclosures, electric, hydraulic or pneumatic control housings, electrical junction boxes or terminal wiring enclosures.
- Provides outstanding insulation and protection where equipment may be hosed down or be very wet.
- Ideal in applications with high temperatures or highly corrosive environments.

### Standards

- UL 508 Type 1, 2, 3, 4, 4X, 12 and 13
- CSA Type 1, 2, 3, 4, 4X, 12 and 13
- **Complies with**
  - NEMA Type 1, 2, 3, 4, 4X, 12 and 13
  - IEC 60529, IP66

### Construction

- Molded fiberglass polyester enclosure with matching cover is easily punched, cut, or drilled.
- Standard JIC sizes under 18" x 16".
- Threaded brass inserts are provided for optional inner panel or terminal kit mounting.
- Cover is fastened with captive stainless steel screws in threaded brass inserts.
- Captive oil resistant gasket provides a positive seal.
- Threaded brass inserts are provided for mounting feet to the rear of the enclosure.
- Stainless steel mounting brackets and hardware are provided for mounting to the rear of the enclosure.
- Enhanced UV inhibitors protect against outdoor weathering.
- Operating temperatures between 130°C and -40°C (266°F to -40°F).
- Impact index of 6.78J (5 ft/lb).
- For corrosion resistance information, please refer to table in Technical Information.

### Finish

- Fiberglass polyester material has a gray finish.
- Optional inner panels are available in white powder coated finished steel or unfinished aluminum.

### Accessories

- Painted steel inner panels  
...see page **436**
- Unfinished aluminum inner panels  
...see page **436**
- Galvanized Panels...see page **436**
- Terminal kit assemblies...see page **441**

Lift Off Cover Part No.	Hinged Cover Part No.	Overall Dimensions			Panel Size								Center	
		A	B	C	D	E	F	G	H	J	S	Z		
<b>PJ664P4</b>	<b>PJ664HP4</b>	6.10	6.10	4.18	4.88	4.88	3.76	5.01	5.01	3.52	4.25	4.25		
<b>PJ864P6</b>	<b>PJ864HP6</b>	8.00	6.12	4.13	6.75	4.88	3.68	6.89	5.01	3.47	6.25	4.25		
<b>PJ1084P9</b>	<b>PJ1084HP9</b>	10.13	8.26	4.13	8.75	6.88	3.68	8.89	7.01	5.47	8.25	6.25		
<b>PJ1086P9</b>	<b>PJ1086HP9</b>	10.13	8.26	6.13	8.75	6.88	5.68	8.89	7.01	5.47	8.25	6.25		
<b>PJ1086P12</b>	<b>PJ1086HP12</b>	10.13	8.26	6.13	8.75	6.88	5.68	8.89	7.01	5.47	8.25	6.25		
<b>PJ12106P16</b>	<b>PJ12106HP16</b>	12.13	10.26	6.13	10.75	8.88	5.68	10.89	9.01	5.47	10.25	8.25		
<b>PJ12106P20</b>	<b>PJ12106HP20</b>	12.13	10.26	6.13	10.75	8.88	5.68	10.89	9.01	5.47	10.25	8.25		
<b>PJ14126P25</b>	<b>PJ14126HP25</b>	14.13	12.26	6.13	12.75	10.88	5.68	12.89	11.01	5.47	12.25	10.25		
<b>PJ16148P30</b>	<b>PJ16148HP30</b>	16.27	14.40	8.13	14.75	12.88	7.68	14.89	13.01	7.47	14.25	12.25		
<b>PJ18168P42</b>	<b>PJ18168HP42</b>	18.40	16.40	8.13	16.88	14.88	7.68	16.97	14.97	7.47	16.25	14.25		

<sup>1</sup> For aluminum panel...see page **380**.

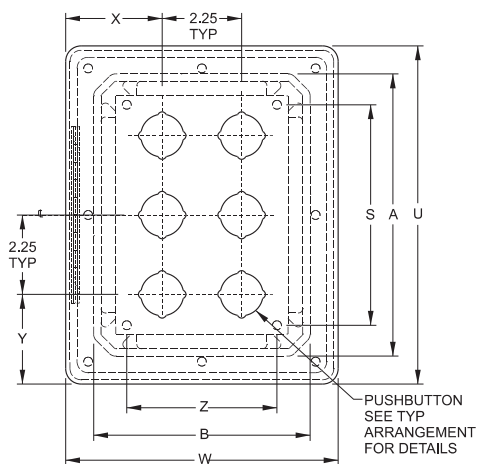
Technical references and CAD downloads available at [www.hammondmfg.com](http://www.hammondmfg.com)

All dimensions in inches unless specified otherwise

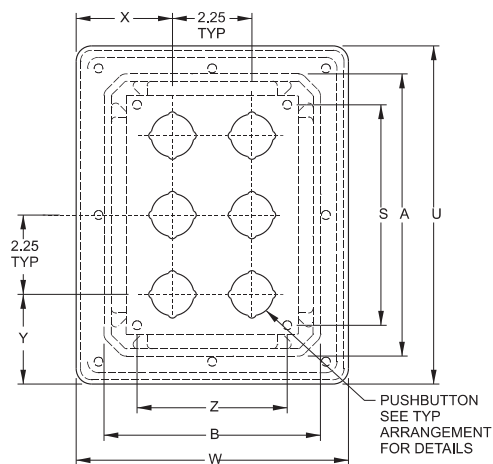
# Polyester Modular Enclosures - NEMA 4X

## PJ Series - Pushbutton Lift Off and Hinged Screw Cover 30.5mm

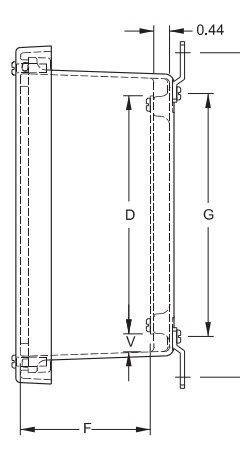
Operator Interface Enclosure



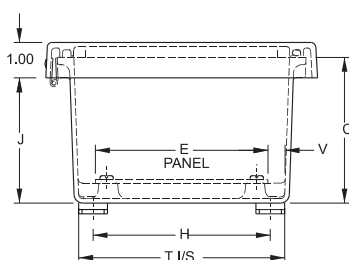
**Top View**  
**Hinged Screw Cover**



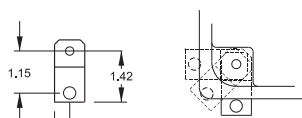
**Top View**  
**Lift Off Screw Cover**



**Side View**

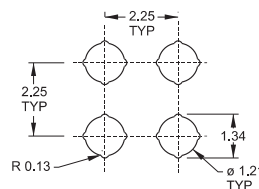


**Front View**



**Optional Mounting Feet  
Locations**

**Thermal Index**  
130°C to -40°C  
(266°F to -40°F)  
**Impact Index**  
6.78J (5 ft/lb)



**Typical Pushbutton  
Arrangement**

PJ664P4 PJ664HP4	PJ864P6 PJ864HP6	PJ1086P9 PJ1086HP9	PJ1086P12 PJ1086HP12	PJ12106P16 PJ12106HP16	PJ12106P20 PJ12106HP20	PJ14126P25 PJ14126HP25	PJ16148P30 PJ16148HP30	PJ18168P42 PJ18168HP42

Pushbutton Enclosures

Lift Off Cover Part No.	Hinged Cover Part No.	Optional L	T	V	U	W	Steel Panel Part No. <sup>1</sup>	No. Holes	X	Y	Ship Wt. Lbs.
PJ664P4	PJ664HP4	7.32	5.83	0.49	7.69	7.69	14R0505	4	2.72	2.72	4
PJ864P6	PJ864HP6	9.19	5.85	0.50	9.59	7.71	14R0705	6	2.73	2.55	4
PJ1084P9	PJ1084HP9	11.19	7.85	0.50	11.77	9.90	14R0907	9	2.68	3.62	6
PJ1086P9	PJ1086HP9	11.19	7.85	0.50	11.77	9.90	14R0907	9	2.68	3.62	6
PJ1086P12	PJ1086HP12	11.19	7.85	0.50	11.77	9.90	14R0907	12	2.68	2.49	6
PJ12106P16	PJ12106HP16	13.19	9.85	0.50	13.77	11.90	14R1109	16	2.55	3.49	8
PJ12106P20	PJ12106HP20	13.19	9.85	0.50	13.77	11.90	14R1109	20	2.55	2.37	8
PJ14126P25	PJ14126HP25	15.19	11.85	0.50	15.73	13.85	14R1311	25	2.43	3.37	11
PJ16148P30	PJ16148HP30	17.19	13.71	0.50	17.87	15.99	14R1513	30	3.50	3.31	12
PJ18168P42	PJ18168HP42	19.28	15.72	0.50	20.00	18.00	P1868	42	3.38	3.25	17

<sup>1</sup> For aluminum panel...see page 380.