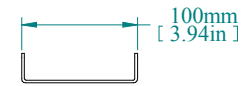
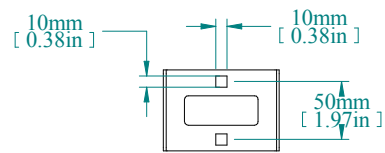


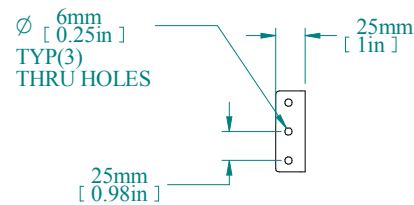
ISOMETRIC VIEW



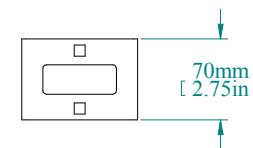
TOP VIEW



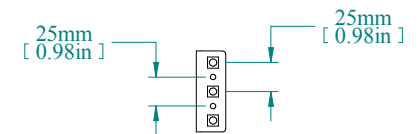
REAR VIEW



L.S VIEW



FRONT VIEW



R.S VIEW

PART NUMBERS	
HAK19800	12 GAUGE ZINC PLATED (ZPL FINISH)

NOTES
Adapts 80mm wide cabinets to 19" rack mounting (includes 4 brackets) Hammond Website for Additional Accessories

Data subject to change without notice. Isometric drawing not to scale.



**HAMMOND  
MANUFACTURING™**  
www.hammondmfg.com  
PART NO. HCR16ZPL