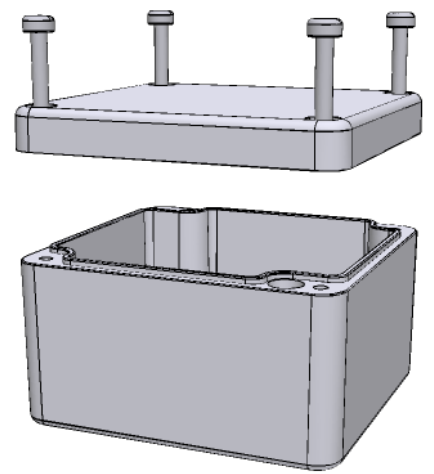



 File #E65324
 NEMA 4, 4X



Enclosures can be Factory Modified (Milling, Drilling, Printing etc.)
 Contact Sales sales@grossautomation.com for quotes
 Solid models of this enclosure available in STEP or IGES.

| NOTES | |
|---|--|
| Purchased assembly includes enclosure, M4x25 lid screws and M4x6 ground screws. | |
| Gasket - Preformed Silicone Rubber | |
| Cover screws should be torqued to 10 lb-in (120 cN-m) | |

| 1590Z110 | |
|--------------------------------|------------|
| PART NUMBERS | |
| Basic Enclosure | 1590Z110 |
| Black Enclosure | 1590Z110BK |
| Grey Enclosure - RAL7001 Gloss | 1590Z110GY |

1590Z110