

Commercial and Type 3R Enclosures



Contents

C-Box Screw Cover with Knockouts	2	Lay In Wireway NEMA 1	16	Screw Cover - Type 3R with Knockouts	30
C-Box Screw Cover without Knockouts	4	N1J Series Small Panel Enclosures	20	Small Hinged Cover - Type 3R with Knockouts	34
C-Box Hinged Cover with Knockouts	6	N1A Series Panel Enclosures	22	Medium Hinged Cover - Type 3R without Knockouts	36
Splitter Boxes & Troughs NEMA 1	8	1420 Series Panel Enclosures	24	Hinged Cover Lift-Off - Type 3R without Knockouts	38
Splitter Blocks & Ground Kits NEMA 1	12	1416 Series Ventilated Component Case	26		
Metering Cabinets NEMA 1	14	1439 Series Surface Mount Panel Enclosure	28		

C-Box Screw Cover with Knockouts

NEMA 1



Application

- Designed for general purpose indoor commercial use as a junction, pull or switch box.

Standards

- UL-50 Type 1
- cUL Type 1
- **Complies with:**
 - NEMA Type 1
 - IEC 529, IP30

Construction

- Formed and spot welded from 16 or 14 gauge steel depending on size.
- Flat steel covers fastened with plated steel screws.
- Keyhole slots permit cover to be lifted off without removing screws entirely.
- Easily removed knockouts on all 4 sides (see drawings for sizes and locations).
- Through holes in back for wall mounting.
- Grounding location embossed in body.

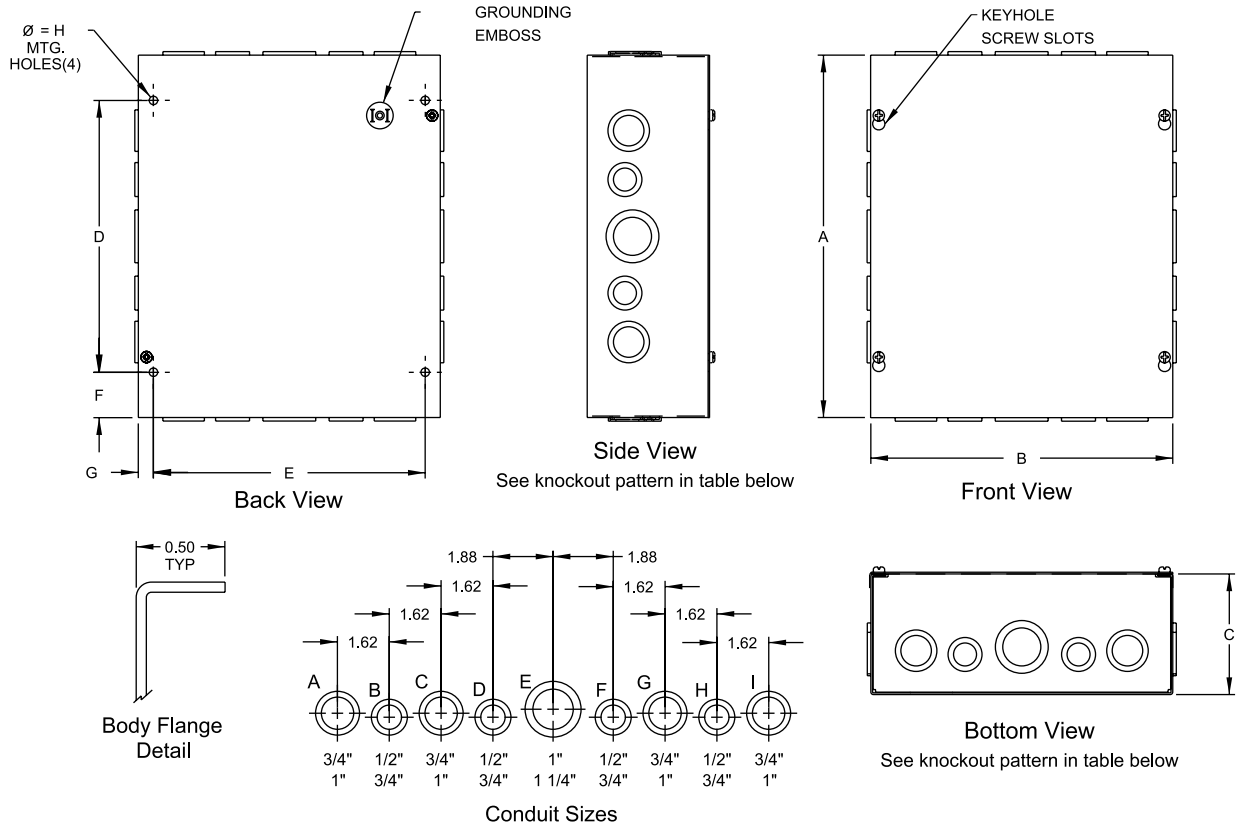
Finish

- Enclosure and cover are finished in ANSI/ASA 61 gray powder coating.

Part No.	Overall Dimensions			Mtg. Centers				Knockout Pattern		H	Knockout Pattern		Ship Wt. lbs.
	A	B	C	D	E	F	G	Sides	Top & Bottom				
CSKO443	4	4	3	2.25	3.00	0.88	0.50	B - C	0.28	A - B	2		
CSKO663	6	6	3	3.00	5.00	1.50	0.50	B - C - D	0.28	B - C - D	3		
CSKO863	8	6	3	5.00	5.00	1.50	0.50	F - G - H - I	0.28	B - C - D	3		
CSKO16143	16	14	3	13.00	13.00	1.50	0.50	B - C - D - E - F - G - H	0.28	B - C - D - E - F - G - H	12		
CSKO18143	18	14	3	15.00	13.00	1.50	0.50	A - B - C - D - E - F - G - H - I	0.28	B - C - D - E - F - G - H	13		
CSKO20143	20	14	3	17.00	13.00	1.50	0.50	A - B - C - D - E - F - G - H - I	0.28	B - C - D - E - F - G - H	13		
CSKO444	4	4	4	2.25	3.00	0.88	0.50	B - C	0.28	A - B	2		
CSKO644	6	4	4	3.00	3.00	1.50	0.50	B - C - D	0.28	A - B	3		
CSKO664	6	6	4	3.00	5.00	1.50	0.50	B - C - D	0.28	B - C - D	3		
CSKO864	8	6	4	5.00	5.00	1.50	0.50	F - G - H - I	0.28	B - C - D	5		
CSKO884	8	8	4	5.00	7.00	1.50	0.50	F - G - H - I	0.28	F - G - H - I	5		
CSKO1084	10	8	4	7.00	7.00	1.50	0.50	F - G - H - I	0.28	F - G - H - I	6		
CSKO10104	10	10	4	7.00	9.00	1.50	0.50	F - G - H - I	0.28	C - D - E - F - G	6		
CSKO1284	12	8	4	9.00	7.00	1.50	0.50	C - D - E - F - G	0.28	F - G - H - I	7		
CSKO12104	12	10	4	9.00	9.00	1.50	0.50	C - D - E - F - G	0.28	C - D - E - F - G	8		
CSKO12124	12	12	4	9.00	11.00	1.50	0.50	C - D - E - F - G	0.28	C - D - E - F - G	9		
CSKO16124	16	12	4	13.00	11.00	1.50	0.50	B - C - D - E - F - G - H	0.28	C - D - E - F - G	12		

Chart continued on next page....

C-Box Screw Cover with Knockouts NEMA 1



Part No.	Overall Dimensions			Mtg. Centers				Knockout Pattern Sides	H	Knockout Pattern Top & Bottom	Ship Wt. lbs.
	A	B	C	D	E	F	G				
CSKO18124	18	12	4	15.00	11.00	1.50	0.50	A - B - C - D - E - F - G - H - I	0.28	C - D - E - F - G	12
CSKO18184	18	18	4	15.00	17.00	1.50	0.50	A - B - C - D - E - F - G - H - I	0.28	A - B - C - D - E - F - G - H - I	16
CSKO24244	24	24	4	21.00	23.00	1.50	0.50	C - D - E - F - G	0.28	C - D - E - F - G	33
CSKO666	6	6	6	3.00	5.00	1.50	0.50	B - C - D	0.28	B - C - D	4
CSKO886	8	8	6	5.00	7.00	1.50	0.50	F - G - H - I	0.28	F - G - H - I	6
CSKO1086	10	8	6	7.00	7.00	1.50	0.50	F - G - H - I	0.28	F - G - H - I	7
CSKO10106	10	10	6	7.00	9.00	1.50	0.50	F - G - H - I	0.28	C - D - E - F - G	8
CSKO12106	12	10	6	9.00	9.00	1.50	0.50	C - D - E - F - G	0.28	C - D - E - F - G	9
CSKO12126	12	12	6	9.00	11.00	1.50	0.50	C - D - E - F - G	0.28	C - D - E - F - G	10
CSKO16126	16	12	6	13.00	11.00	1.50	0.50	B - C - D - E - F - G - H	0.28	C - D - E - F - G	13
CSKO16166	16	16	6	13.00	15.00	1.50	0.50	B - C - D - E - F - G - H	0.28	B - C - D - E - F - G - H	16
CSKO18126	18	12	6	15.00	11.00	1.50	0.50	A - B - C - D - E - F - G - H - I	0.28	C - D - E - F - G	14
CSKO18186	18	18	6	15.00	17.00	1.50	0.50	A - B - C - D - E - F - G - H - I	0.28	A - B - C - D - E - F - G - H - I	19
CSKO24186	24	18	6	21.00	17.00	1.50	0.50	A - B - C - D - E - F - G - H - I	0.28	A - B - C - D - E - F - G - H - I	26
CSKO24246	24	24	6	21.00	22.50	1.50	0.75	A - B - C - D - E - F - G - H - I	0.44	A - B - C - D - E - F - G - H - I	37
CSKO30246	30	24	6	27.00	22.50	1.50	0.75	A - B - C - D - E - F - G - H - I	0.44	A - B - C - D - E - F - G - H - I	45
CSKO36246	36	24	6	33.00	22.50	1.50	0.75	A - B - C - D - E - F - G - H - I	0.44	A - B - C - D - E - F - G - H - I	57
CSKO12128	12	12	8	9.00	11.00	1.50	0.50	C - D - E - F - G	0.28	C - D - E - F - G	12
CSKO16168	16	16	8	13.00	15.00	1.50	0.50	B - C - D - E - F - G - H	0.28	B - C - D - E - F - G - H	20
CSKO24248	24	24	8	21.00	22.50	1.50	0.75	A - B - C - D - E - F - G - H - I	0.44	A - B - C - D - E - F - G - H - I	44
CSKO202010	20	20	10	17.00	19.00	1.50	0.75	A - B - C - D - E - F - G - H - I	0.28	A - B - C - D - E - F - G - H - I	37
CSKO242410	24	24	10	21.00	22.50	1.50	0.50	A - B - C - D - E - F - G - H - I	0.44	A - B - C - D - E - F - G - H - I	52
CSKO302010	30	20	10	27.00	18.50	1.50	0.75	A - B - C - D - E - F - G - H - I	0.44	A - B - C - D - E - F - G - H - I	59
CSKO362410	36	24	10	33.00	22.50	1.50	0.75	A - B - C - D - E - F - G - H - I	0.44	A - B - C - D - E - F - G - H - I	75

C-Box Screw Cover without Knockouts NEMA 1



Application

- Designed for general purpose indoor commercial use as a junction, pull or switch box.

Standards

- UL-50 Type 1
- cUL Type 1
- **Complies with**
 - NEMA Type 1
 - IEC 529, IP30

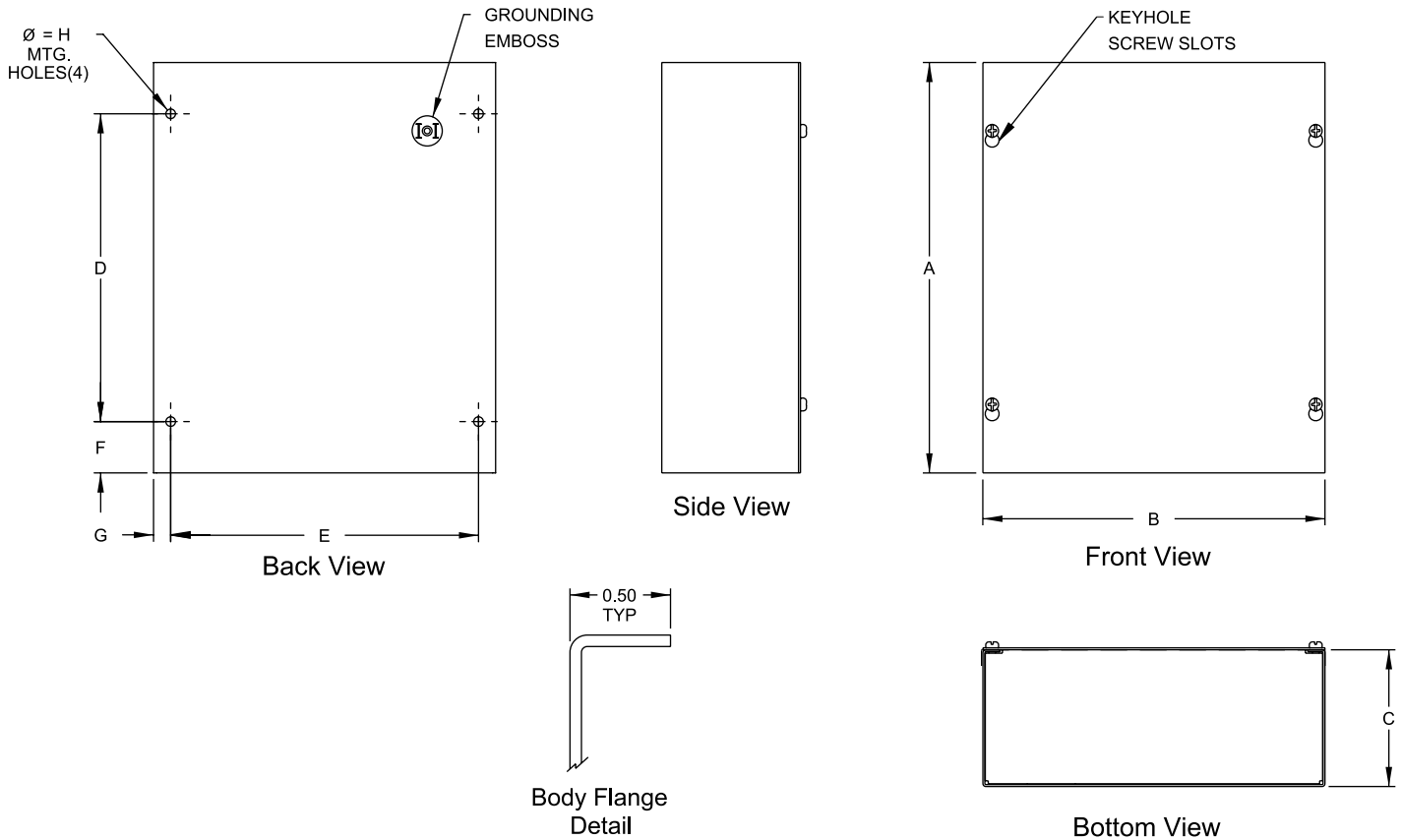
Construction

- Formed and spot welded from 16, 14 or 12 gauge steel depending on size.
- Flat steel covers fastened with plated steel screws.
- Keyhole slots permit cover to be lifted off without removing screws entirely.
- Through holes in back for wall mounting.
- Grounding location embossed in body.

Finish

- Enclosure and cover are finished in ANSI/ASA 61 gray powder coating.

C-Box Screw Cover without Knockouts NEMA 1



Part No.	Overall Dimensions			Mtg. Centers					Ship Wt. lbs.
	A	B	C	D	E	F	G	H	
CS443	4	4	3	2.25	3.00	0.88	.50	.28	2
CS663	6	6	3	3.00	5.00	1.50	.50	.28	3
CS863	8	6	3	5.00	5.00	1.50	.50	.28	3
CS16143	16	14	3	13.00	13.00	1.50	.50	.28	12
CS18143	18	14	3	15.00	13.00	1.50	.50	.28	13
CS20143	20	14	3	17.00	13.00	1.50	.50	.28	13
CS444	4	4	4	2.25	3.00	0.88	.50	.28	2
CS644	6	4	4	3.00	3.00	1.50	.50	.28	3
CS664	6	6	4	3.00	5.00	1.50	.50	.28	3
CS864	8	6	4	5.00	5.00	1.50	.50	.28	5
CS884	8	8	4	5.00	7.00	1.50	.50	.28	5
CS1084	10	8	4	7.00	7.00	1.50	.50	.28	6
CS10104	10	10	4	7.00	9.00	1.50	.50	.28	6
CS1284	12	8	4	9.00	7.00	1.50	.50	.28	7
CS12104	12	10	4	9.00	9.00	1.50	.50	.28	8
CS12124	12	12	4	9.00	11.00	1.50	.50	.28	9
CS16124	16	12	4	13.00	11.00	1.50	.50	.28	12
CS18124	18	12	4	15.00	11.00	1.50	.50	.28	12
CS18184	18	18	4	15.00	17.00	1.50	.50	.28	16
CS24244	24	24	4	21.00	23.00	1.50	.50	.28	33
CS666	6	6	6	3.00	5.00	1.50	.50	.28	4
CS886	8	8	6	5.00	7.00	1.50	.50	.28	6
CS1086	10	8	6	7.00	7.00	1.50	.50	.28	7

Part No.	Overall Dimensions			Mtg. Centers					Ship Wt. lbs.
	A	B	C	D	E	F	G	H	
CS10106	10	10	6	7.00	9.00	1.50	.50	.28	8
CS12106	12	10	6	9.00	9.00	1.50	.50	.28	8
CS12126	12	12	6	9.00	11.00	1.50	.50	.28	9
CS16126	16	12	6	13.00	11.00	1.50	.50	.28	13
CS16166	16	16	6	13.00	15.00	1.50	.50	.28	16
CS18126	18	12	6	15.00	11.00	1.50	.50	.28	14
CS18186	18	18	6	15.00	17.00	1.50	.50	.28	19
CS24186	24	18	6	21.00	17.00	1.50	.50	.28	26
CS24246	24	24	6	21.00	22.50	1.50	.75	.44	37
CS30246	30	24	6	27.00	22.50	1.50	.75	.44	45
CS36246	36	24	6	33.00	22.50	1.50	.75	.44	57
CS36366	36	36	6	33.00	34.50	1.50	.75	.44	70
CS12128	12	12	8	9.00	11.00	1.50	.50	.28	12
CS16168	16	16	8	13.00	15.00	1.50	.50	.28	18
CS18188	18	18	8	15.00	17.00	1.50	.50	.28	21
CS24248	24	24	8	21.00	22.50	1.50	.75	.44	42
CS36248	36	24	8	33.00	22.50	1.50	.75	.44	65
CS202010	20	20	10	17.00	19.00	1.50	.75	.44	35
CS242410	24	24	10	21.00	22.50	1.50	.50	.28	49
CS302010	30	20	10	27.00	18.50	1.50	.75	.44	55
CS362410	36	24	10	33.00	22.50	1.50	.75	.44	70
CS363612	36	36	12	33.00	34.50	1.50	.75	.44	88

C-Box Hinged Cover with Knockouts

NEMA 1



Application

- Designed for general purpose indoor commercial use as a junction, pull or switch box.
- Hinged cover with latch provides easy access during installation and maintenance.

Standards

- UL-50 Type 1
 - cUL Type 1
- Complies with**
- NEMA Type 1
 - IEC 529, IP30

Construction

- Formed and spot welded from 16 or 14 gauge steel depending on size.
- Formed steel covers close by use of slotted quarter turn latch.
- Full swing door using butt hinges.
- Easily removed knockouts on all 4 sides (see drawings for sizes and locations).
- Through holes in back for wall mounting.
- Grounding location embossed in body.

Finish

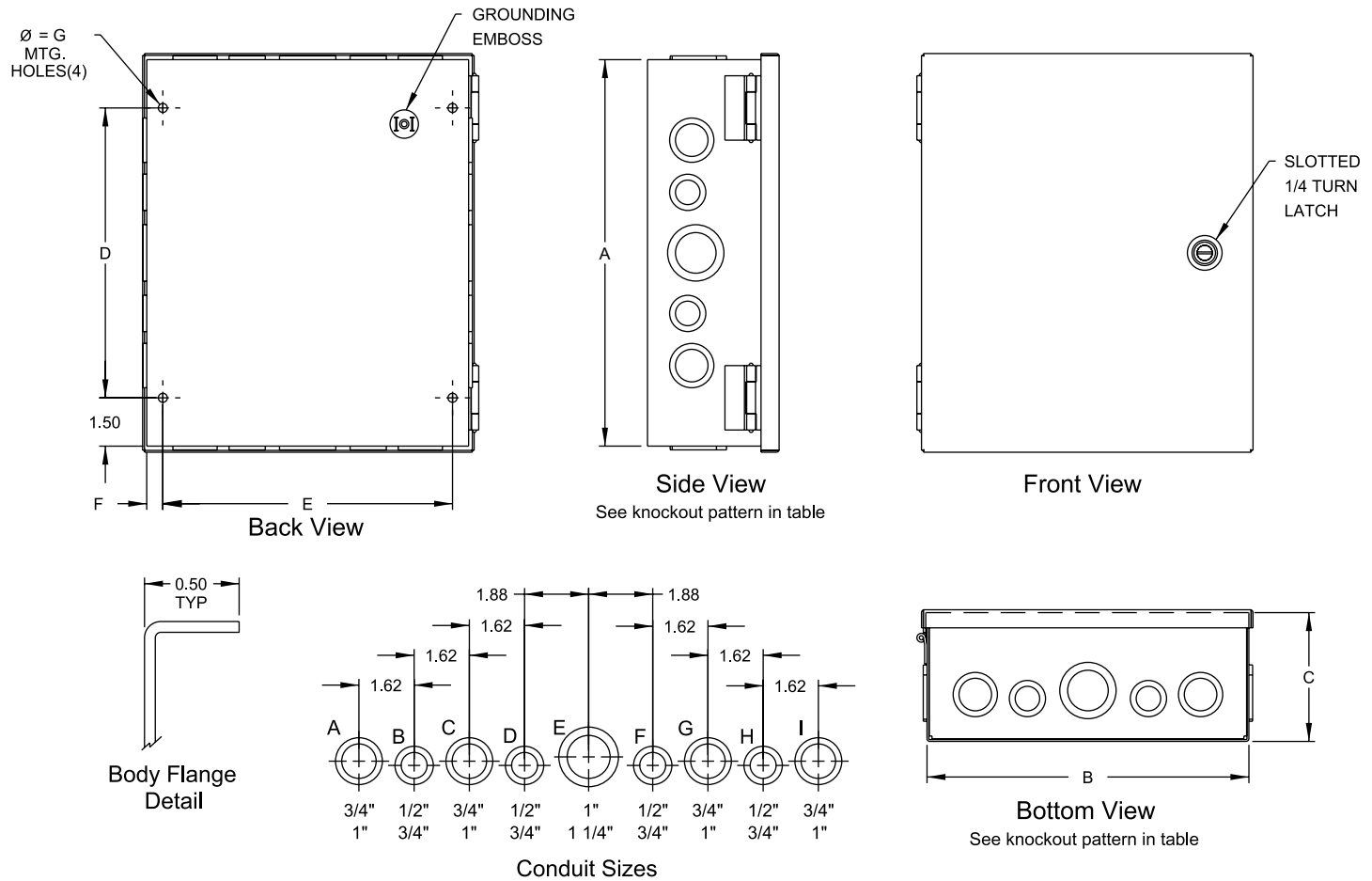
- Enclosure and cover are finished in ANSI/ASA 61 gray powder coating.

Part No.	Overall Dimensions			Mtg. Centers				Knockout Pattern		Ship Wt. lbs.
	A	B	C	D	E	F	G	Sides	Top & Bottom	
CHKO663	6	6	3.5	3.00	5.00	.50	.28	B - C - D	B - C - D	3
CHKO644	6	4	4	3.00	3.00	.50	.28	B - C - D	A - B	3
CHKO664	6	6	4	3.00	5.00	.50	.28	B - C - D	B - C - D	3
CHKO864	8	6	4	5.00	5.00	.50	.28	F - G - H - I	B - C - D	4
CHKO884	8	8	4	5.00	7.00	.50	.28	F - G - H - I	F - G - H - I	5
CHKO1084	10	8	4	7.00	7.00	.50	.28	F - G - H - I	F - G - H - I	6
CHKO10104	10	10	4	7.00	9.00	.50	.28	F - G - H - I	C - D - E - F - G	7
CHKO1284	12	8	4	9.00	7.00	.50	.28	C - D - E - F - G	F - G - H - I	8
CHKO12104	12	10	4	9.00	9.00	.50	.28	C - D - E - F - G	C - D - E - F - G	8
CHKO12124	12	12	4	9.00	11.00	.50	.28	C - D - E - F - G	C - D - E - F - G	9
CHKO16124	16	12	4	13.00	11.00	.50	.28	B - C - D - E - F - G - H	C - D - E - F - G	12
CHKO18124	18	12	4	15.00	11.00	.50	.28	A - B - C - D - E - F - G - H - I	C - D - E - F - G	12
CHKO666	6	6	6	3.00	5.00	.50	.28	B - C - D	B - C - D	4

Chart continued on next page....

C-Box Hinged Cover with Knockouts

NEMA 1



Part No.	Overall Dimensions			Mtg. Centers				Knockout Pattern Sides	Knockout Pattern Top & Bottom	Ship Wt. lbs.
	A	B	C	D	E	F	G			
CHKO886	8	8	6	5.00	7.00	.50	.28	F - G - H - I	F - G - H - I	6
CHKO1086	10	8	6	7.00	7.00	.50	.28	F - G - H - I	F - G - H - I	7
CHKO10106	10	10	6	7.00	9.00	.50	.28	F - G - H - I	C - D - E - F - G	8
CHKO12106	12	10	6	9.00	9.00	.50	.28	C - D - E - F - G	C - D - E - F - G	8
CHKO12126	12	12	6	9.00	11.00	.50	.28	C - D - E - F - G	C - D - E - F - G	10
CHKO16126	16	12	6	13.00	11.00	.50	.28	B - C - D - E - F - G - H	C - D - E - F - G	13
CHKO16166	16	16	6	13.00	15.00	.50	.28	B - C - D - E - F - G - H	B - C - D - E - F - G - H	14
CHKO18126	18	12	6	15.00	11.00	.50	.28	A - B - C - D - E - F - G - H - I	C - D - E - F - G	14
CHKO18186	18	18	6	15.00	17.00	.50	.28	A - B - C - D - E - F - G - H - I	A - B - C - D - E - F - G - H - I	20
CHKO24186	24	18	6	21.00	17.00	.50	.28	A - B - C - D - E - F - G - H - I	A - B - C - D - E - F - G - H - I	24
CHKO24246	24	24	6	21.00	22.50	.75	.44	A - B - C - D - E - F - G - H - I	A - B - C - D - E - F - G - H - I	40
CHKO30246	30	24	6	27.00	22.50	.75	.44	A - B - C - D - E - F - G - H - I	A - B - C - D - E - F - G - H - I	49
CHKO36246	36	24	6	33.00	22.50	.75	.44	A - B - C - D - E - F - G - H - I	A - B - C - D - E - F - G - H - I	57
CHKO36248	36	24	8	33.00	22.50	.75	.44	A - B - C - D - E - F - G - H - I	A - B - C - D - E - F - G - H - I	60

Splitter Boxes NEMA 1



Application

- The splitter boxes are designed for indoor distribution of up to 600 V (max) service using either 3 or 4 wires.

Standards

- CSA Certified

Construction

- Formed and spot welded from 14 or 16 gauge steel.
- Factory installed splitter blocks.
- Series of knockouts on each side
- Padlocking hasp.

Finish

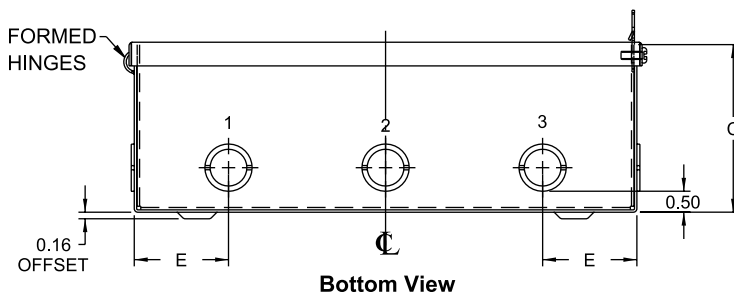
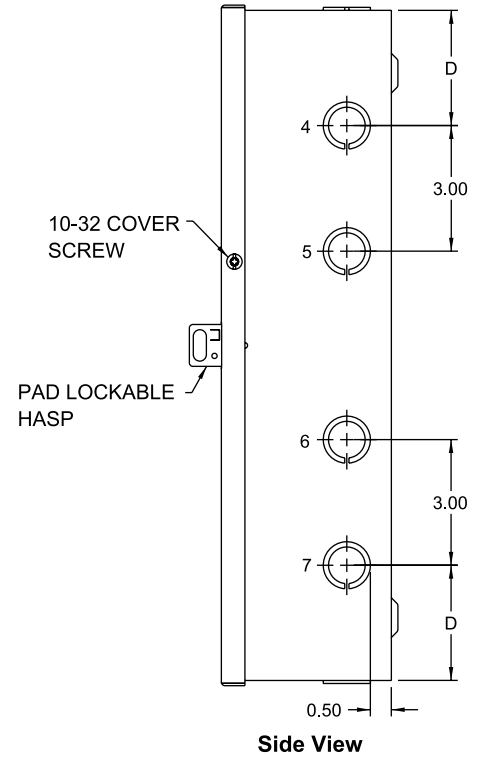
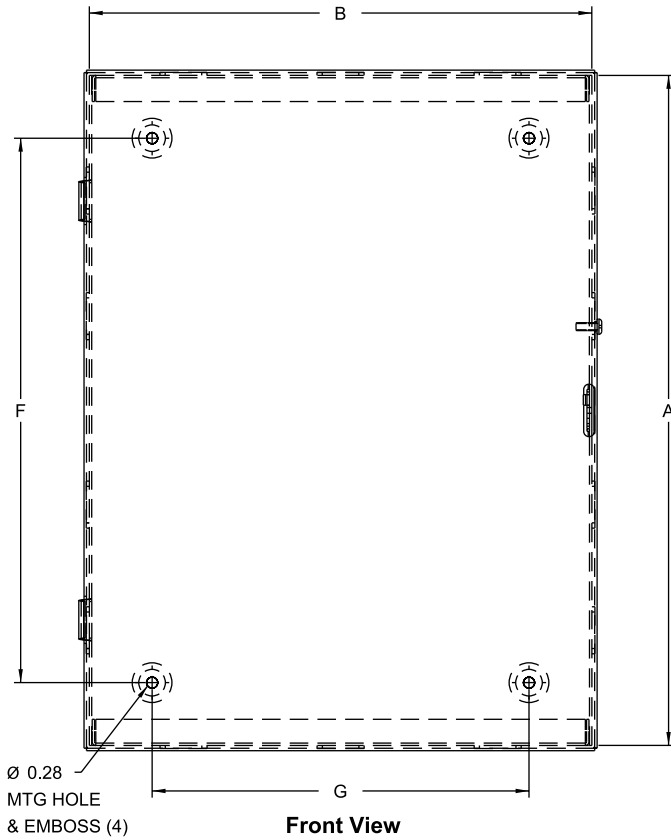
- Enclosure and cover are finished in ANSI/ASA 61 gray powder coating.

Part Number		CU/AL Amps	H	Dimensions			Ship Wt. lbs
3 Wire	4 Wire			W	D		
CSB73	CSB74	70/70	12	10	4	9	
CSB103	CSB104	125/120	15	10	4	10	
CSB203	CSB204	225/225	18	12	5	16	
CSB403	CSB404	400/340	24	17	6	37	
CSB603*	CSB604*	600/574	30	24	7	63	

* 14 gauge steel

Splitter Boxes

NEMA 1



NOTE: KNOCKOUTS TYPICAL ON OPPOSITE SIDES

Part Number		Optional Grounding Kit	CU/AL Amps	Dimensions				Conduit Size (Location)					
3 Wire	4 Wire			A	B	C	D	E	F	G	1/2"-3/4"	3/4"-1"	2"-2 1/2"
CSB73	CSB74	CGK125	70/70	12	10	4	2.75	2.25	9.00	7.00	1,3,7	2,4	-
CSB103	CSB104	CGK125	125/120	15	10	4	2.75	2.25	12.00	7.00	1,3,7	2,4	-
CSB203	CSB204	CGK225	225/225	18	12	5	3.00	3.50	15.00	9.00	1,3,7	4	1,3
CSB403	CSB404	CGK400	400/340	24	17	6	3.31	4.88	21.00	14.00	-	-	-
CSB603*	CSB604*	CGK600	600/574	30	24	7	4.00	5.00	27.00	21.00	-	-	-

* 14 gauge steel

Splitter Troughs

NEMA 1



Application

- The splitter troughs are designed for indoor distribution of up to 600 V (max) service using either 3 or 4 wires.

Standards

- CSA Certified

Construction

- Formed and spot welded from 14 or 16 gauge steel.
- Factory installed splitter blocks.
- Series of knockouts on each side
- Padlocking hasp.

Finish

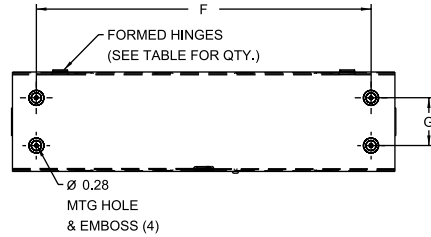
- Enclosure and cover are finished in ANSI/ASA 61 gray powder coating.

Part Number		CU/AL Amps	Dimensions			Ship Wt. lbs
3 Wire	4 Wire		H	W	D	
CST273	CST274	70/70	24	6	4	12
CST373	CST374	70/70	36	6	4	17
CST473	CST474	70/70	48	6	4	21
CST2103	CST2104	125/120	24	6	4	12
CST3103	CST3104	125/120	36	6	4	17
CST4103	CST4104	125/120	48	6	4	21
CST6103*	CST6104*	125/120	72	8	5	39
CST2203*	-	225/225	24	8	5	16
CST3203*	CST3204*	225/225	36	8	5	22
CST4203*	CST4204*	225/225	48	8	5	27
CST5203*	CST5204*	225/225	60	8	5	33
CST6203*	CST6204*	225/225	72	8	5	39
CST3403*	-	400/340	36	10	6	35
CST4403*	CST4404*	400/340	48	10	6	45
CST5403*	CST5404*	400/340	60	10	6	58
CST6403*	CST6404*	400/340	72	10	6	62
CST4603*	CST4604*	600/574	48	10	6	45
CST5603*	CST5604*	600/574	60	10	6	58
CST6603*	CST6604*	600/574	72	10	6	62

* 14 gauge steel

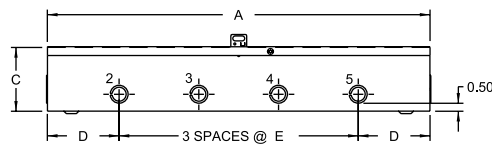
Splitter Troughs

NEMA 1

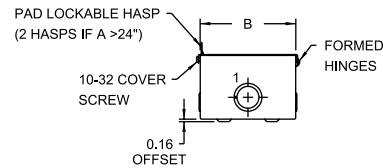


Typical Top View

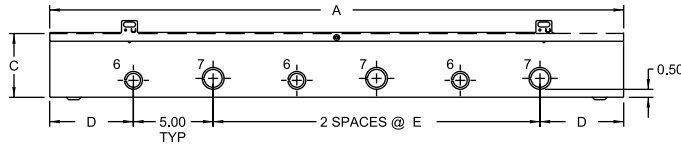
NOTE: KNOCKOUTS TYPICAL ON OPPOSITE SIDES



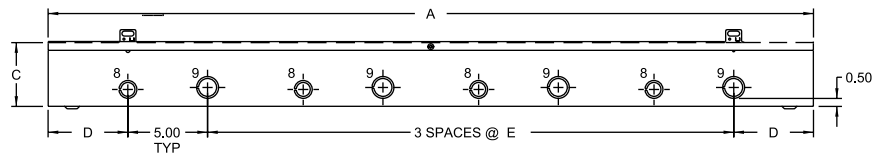
Detail - F



Typical End View



Detail - G



Detail - H

Part Number		Optional Grounding Kit	CU/AL Amps	Dimensions						Detail	Conduit Size (Location)				
3 Wire	4 Wire			A	B	C	D	E	F		G	1/2"-3/4"	3/4"-1"	1"-1 1/4"	2"-2 1/2"
CST273	CST274	CGK225	70/70	24	6	4	4.50	5.00	21.00	3.00	F	2,3,4,5	-	1	-
CST373	CST374	CGK225	70/70	36	6	4	7.50	7.00	33.00	3.00	F	2,3,4,5	-	1	-
CST473	CST474	CGK225	70/70	48	6	4	7.50	11.00	45.00	3.00	F	2,3,4,5	-	1	-
CST2103	CST2104	CGK225	125/120	24	6	4	4.50	5.00	21.00	3.00	F	2,3,4,5	-	1	-
CST3103	CST3104	CGK225	125/120	36	6	4	7.50	7.00	33.00	3.00	F	2,3,4,5	-	1	-
CST4103	CST4104	CGK225	125/120	48	6	4	7.50	11.00	45.00	3.00	F	2,3,4,5	-	1	-
CST6103*	CST6104*	CGK225	125/120	72	8	5	5.25	10.25	69.00	5.00	H	8	9	1	-
CST2203*	-	CGK225	225/225	24	8	5	4.50	5.00	21.00	5.00	F	2,4	3,5	-	1
CST3203*	CST3204*	CGK225	225/225	36	8	5	5.25	10.25	33.00	5.00	G	6	7	-	1
CST4203*	CST4204*	CGK225	225/225	48	8	5	5.00	11.00	45.00	5.00	H	8	9	-	1
CST5203*	CST5204*	CGK225	225/225	60	8	5	5.00	15.00	57.00	5.00	H	8	9	-	1
CST6203*	CST6204*	CGK225	225/225	72	8	5	5.00	19.00	69.00	5.00	H	8	9	-	1
CST3403*	-	CGK400	400/340	36	10	6	5.25	10.25	33.00	7.00	G	6	7	-	-
CST4403*	CST4404*	CGK400	400/340	48	10	6	5.00	11.00	45.00	7.00	H	8	9	-	-
CST5403*	CST5404*	CGK400	400/340	60	10	6	5.00	15.00	57.00	7.00	H	8	9	-	-
CST6403*	CST6404*	CGK400	400/340	72	10	6	5.00	19.00	69.00	7.00	H	8	9	-	-
CST4603*	CST4604*	CGK400	600/574	48	10	6	5.00	11.00	45.00	7.00	H	8	9	-	-
CST5603*	CST5604*	CGK400	600/574	60	10	6	5.00	15.00	57.00	7.00	H	8	9	-	-
CST6603*	CST6604*	CGK400	600/574	72	10	6	5.00	19.00	69.00	7.00	H	8	9	-	-

* 14 gauge steel

Splitter Blocks



Application

- These blocks are used in Hammond standard splitter troughs and boxes.
- The design includes the main and branch lugs which can use either copper or aluminum conductors.
- All blocks are rated 600 V.

Standards

- CSA Certified

Construction

- Cu-Al monopiece connectors are secured to insulators.
- Each block includes a main lug and branch lugs.



CSBL125B



CSBL125T



CSBL225



CSBL400



CSBL600

Part Number	Main Lug Ampacity	Max./Min. Wire Capacity	Branch Lugs Ampacity	Max./Min. Wire Capacity	Ship Wt lbs
CSBL125B	125	1/0 - 14	3/70	3 x (2-14)	1
CSBL125T	125	1/0 - 14	6/70	6 x (2-14)	1
CSBL225	225	300MCM - 6	6/125	6 x (2/0-14)	1
CSBL400	400	600MCM - 4 or 2 (x) 250 MCM - 1/0	6/200	6 x (3/0 - 14)	1
CSBL600	600	(2x) 600MCM - 4 or (4x) 250MCM - 1/0	6/200	6 x (3/0-14)	1

Grounding Kits



Application

- Designed for use with aluminum and copper conductors.

Standards

- CSA Certified

Construction

- Lugs are constructed from high strength, high conductive aluminum alloy 606-T6, rated at 90°C
- Kits are supplied with all necessary mounting hardware.



CGK125



CGK225



CGK400



CGK600



CGK

Part Number	Application	Number of Circuits and Wire Sizes
CGK125	Splitter Box 70 A, 125 A	4 x (2-14 CU-AL)
CGK225	Splitter Box 225 A/Trough 70 A, 125A, 225 A	7 x (2-14 CU-AL)
CGK400	Splitter Box/Trough 400 A	7 x (2-14 CU-AL) & 1 x (1/0-14 CU-AL)
CGK600	Splitter Box/Trough 600 A	7 x (2-14 CU-AL) & 1 x (300 KCM - 6 CU-AL)
CGK	Junction/Pull Box	3 x (4-14 ca-AL)

Metering Cabinets NEMA 1



Application

- Designed for indoor housing of metering transformers.

Standards

- CSA Approved

Construction

- Formed and spot welded from 14 or 16 gauge steel.
- Spot welded construction and formed edges.
- Removable inner panel.
- Hinged covers.
- 2 cutouts in top of each cabinet with metering plates included.

Finish

- Enclosure and cover are finished in ANSI/ASA 61 gray inside and out.

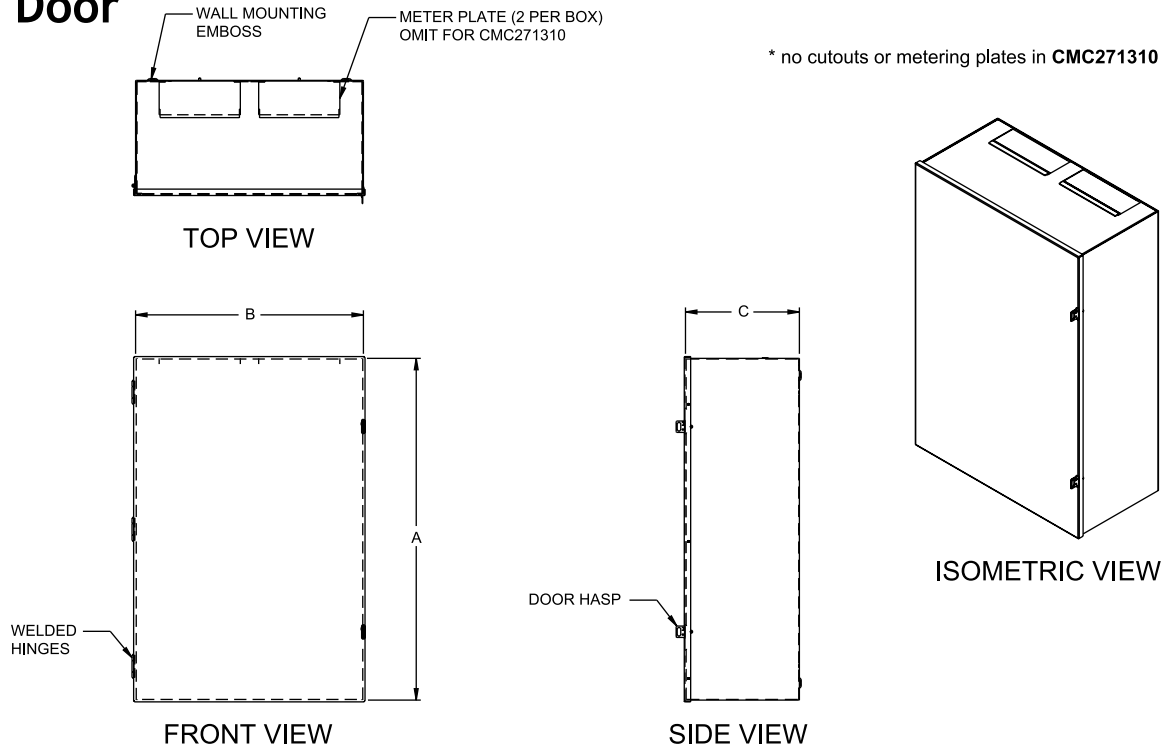
Part No.	Dimensions			Panel Dimensions	Type of Door	Latch Type	Latch Qty	Metering Plates	Ship Wt. lbs.
	A	B	C						
CMC202010	20	20	10	16 x 16	Single	Hasp	2	2	42
CMC271310*	27	13	10	23 x 9	Single	Hasp	2	0	38
CMC302010	30	20	10	26 x 16	Single	Hasp	2	2	69
CMC303010	30	30	10	26 x 26	Double	2 Hasp + Quarter Turn	3	2	92
CMC363612	36	36	12	32 x 32	Double	2 Hasp + Quarter Turn	3	2	131
CMC484812	48	48	12	44 x 44	Double	2 Hasp + Quarter Turn	3	2	210

* no cutouts in top or metering plates

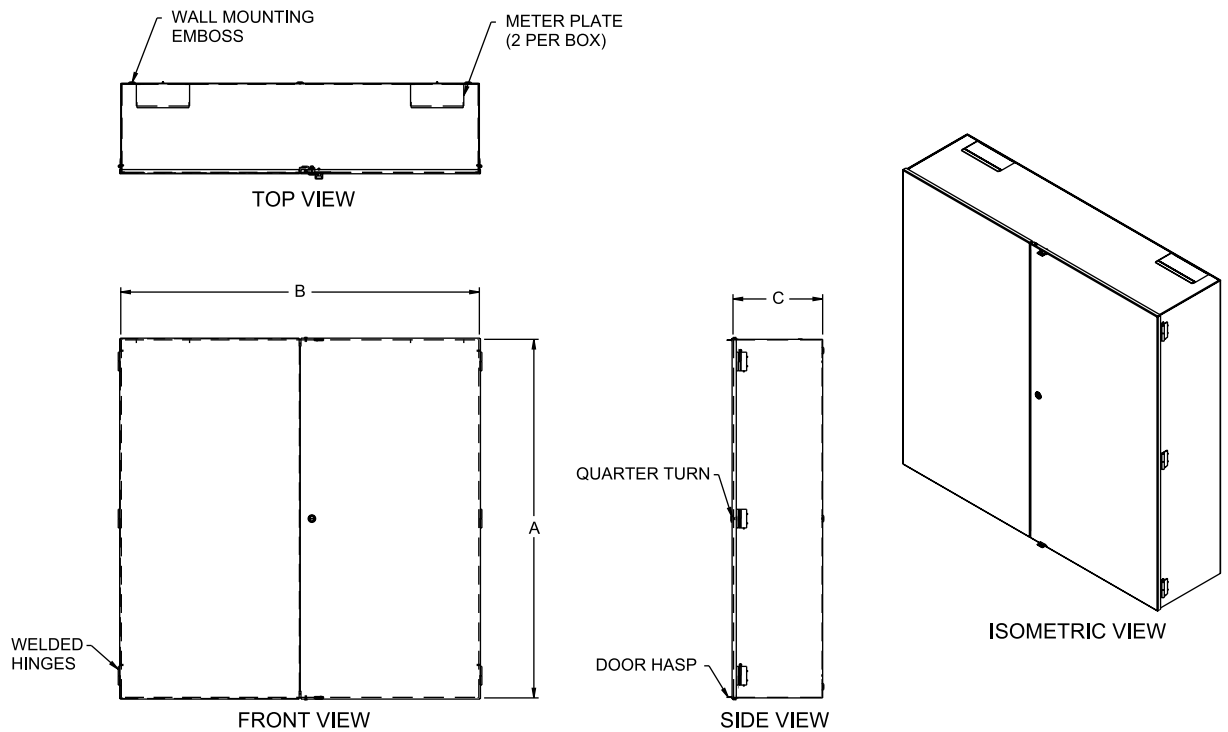
Metering Cabinets

NEMA 1

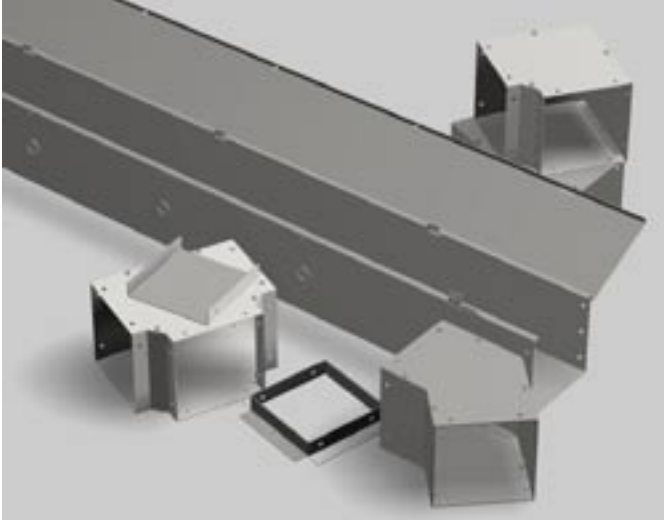
Single Door



Double Door



Lay In Wireway NEMA 1



Application

- Construction designed to ensure electrical continuity and to permit fast and easy indoor installation of multiple wireway runs.

Standards

- UL-50 Type 1
- cUL Type 1

Construction

- Formed from 16 or 14 gauge steel.
- Hinged covers and Joiners make it possible to lay in continuous run of cables.
- Covers are hinged on 24" centers (max)
- A standard 1/4" wrench or socket is the only tool required for assembly.
- Adequate concentric knockouts (1/2", 3/4" conduit size) are standard on straight lengths.
- Knockouts are on 12" centers.
- Barriers to separate different cable voltages are available as an accessory.

- Unobstructed interior speeds up laying of cables.
- Joiner included with the straight sections.
- Optional hanger brackets allow for vertical and horizontal mounting.

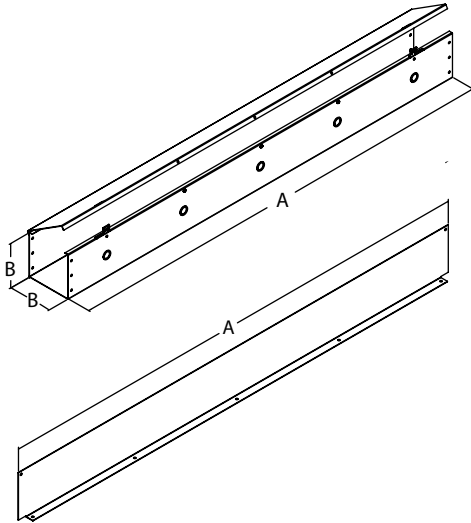
Finish

- Sections and components are finished in ANSI/ASA 61 gray.
- Couplings are unpainted galvanized.

Lay In Wireway NEMA 1

	2.5 x 2.5	4 x 4	6 x 6	8 x 8
Straight Section 12"	CWST212	CWST412	CWST612	CWST812
Straight Section 24"	CWST224	CWST424	CWST624	CWST824
Straight Section 36"	CWST236	CWST436	CWST636	CWST836
Straight Section 48"	CWST248	CWST448	CWST648	CWST848
Straight Section 60"	CWST260	CWST460	CWST660	CWST860
Straight Section 72"	CWST272	CWST472	CWST672	CWST872
Straight Section 96"	CWST296	CWST496	CWST696	CWST896
Straight Section 120"	CWST2120	CWST4120	CWST6120	CWST8120
Straight Section Barrier 12"	CWBA212	CWBA412	CWBA612	CWBA812
Straight Section Barrier 24"	CWBA224	CWBA424	CWBA624	CWBA824
Straight Section Barrier 36"	CWBA236	CWBA436	CWBA636	CWBA836
Straight Section Barrier 48"	CWBA248	CWBA448	CWBA648	CWBA848
Straight Section Barrier 60"	CWBA260	CWBA460	CWBA660	CWBA860
Straight Section Barrier 72"	CWBA272	CWBA472	CWBA672	CWBA872
Straight Section Barrier 96"	CWBA296	CWBA496	CWBA696	CWBA896
Straight Section Barrier 120"	CWBA2120	CWBA4120	CWBA6120	CWBA8120
Elbow 90 degrees	CWEL290	CWEL490	CWEL690	CWEL890
Elbow 45 degrees	CWEL245	CWEL445	CWEL645	CWEL845
Elbow 22.5 degrees	CWEL222	CWEL422	CWEL622	CWEL822
Tee Fitting	CWTF2	CWTF4	CWTF6	CWTF8
Cross Fitting	CWCF2	CWCF4	CWCF6	CWCF8
Reducer 4 x 4 to 2.5 x 2.5	-	CWRD42	-	-
Reducer 6 x 6 to 4 x 4	-	-	CWRD64	-
Reducer 8 x 8 to 6 x 6	-	-	-	CWRD86
Bracket Hanger Ceiling Type	CWHD2	CWHD4	CWHD6	CWHD8
Bracket Hanger Wall Type	CWHW2	CWHW4	CWHW6	CWHW8
Closing Plate	CWCP2	CWCP4	CWCP6	CWCP8
Adapter (Box Connector)	CWAD2	CWAD4	CWAD6	CWAD8
Joiner	CWJO2	CWJO4	CWJO6	CWJO8
Telescope Fitting	CWTL2	CWTL4	CWTL6	CWTL8

Lay In Wireway NEMA 1



Straight Section

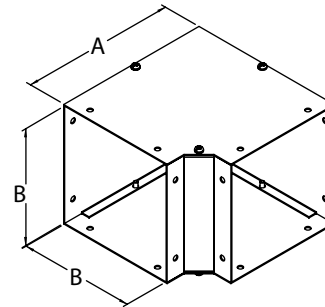
A=12"	A=24"	A=36"	A=48"	A=60"	A=72"	A=96"	A=120"	B
CWST212	CWST224	CWST236	CWST248	CWST260	CWST272	CWST296	CWST2120	2.5
CWST412	CWST424	CWST436	CWST448	CWST460	CWST472	CWST496	CWST4120	4
CWST612	CWST624	CWST636	CWST648	CWST660	CWST672	CWST696	CWST6120	6
CWST812	CWST824	CWST836	CWST848	CWST860	CWST872	CWST896	CWST8120	8

Straight Section Barrier

A=11.88"	A=23.88"	A=35.88"	A=47.88"	A=54.88"	A=71.88"	A=95.88"	A=119.88"	B
CWBA212	CWBA224	CWBA236	CWBA248	CWBA260	CWBA272	CWBA296	CWBA2120	2.5
CWBA412	CWBA424	CWBA436	CWBA448	CWBA460	CWBA472	CWBA496	CWBA4120	4
CWBA612	CWBA624	CWBA636	CWBA648	CWBA660	CWBA672	CWBA696	CWBA6120	6
CWBA812	CWBA824	CWBA836	CWBA848	CWBA860	CWBA872	CWBA896	CWBA8120	8

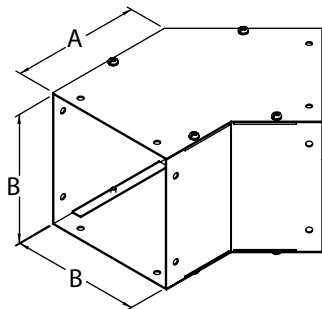
Elbow 90°

Part No.	A	B
CWEL290	4.5	2.5
CWEL490	6	4
CWEL690	8	6
CWEL890	10	8



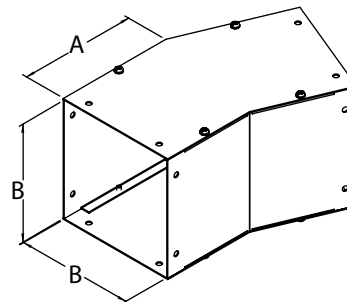
Elbow 45°

Part No.	A	B
CWEL245	2.5	2.5
CWEL445	4	4
CWEL645	6	6
CWEL845	8	8



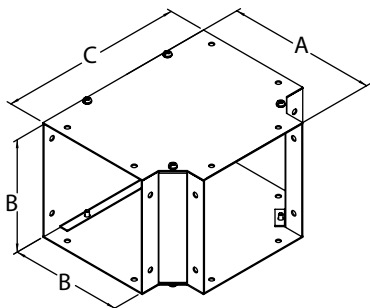
Elbow 22.5°

Part No.	A	B
CWEL222	2.5	2.5
CWEL422	4	4
CWEL622	6	6
CWEL822	8	8



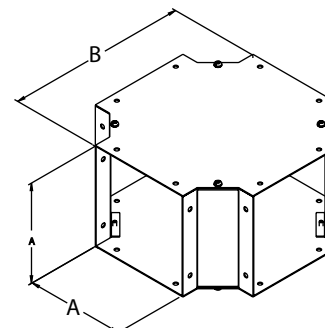
Tee Fitting

Part No.	A	B	C
CWTF2	4.5	2.5	6.386
CWTF4	6	4	7.886
CWTF6	8	6	9.886
CWTF8	10	8	11.856

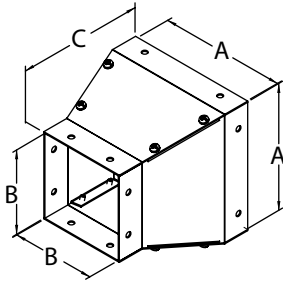


Cross Fitting

Part No.	A	B
CWCF2	2.5	7.5
CWCF4	4	9
CWCF6	6	11
CWCF8	8	13



Lay In Wireway NEMA 1

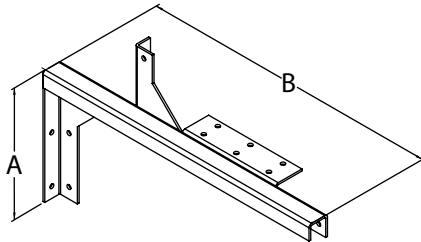
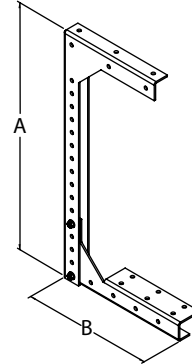


Reducer

Part No.	Size	A	B	C
CWRD42	4 x 4 to 2.5 x 2.5	4	2.5	6
CWRD64	6 x 6 to 4 x 4	6	4	6
CWRD86	8 x 8 to 6 x 6	8	6	6

Bracket Hanger Ceiling Type

Part No.	A(max.)	B
CWHD2	12	6.625
CWHD4	15	8.125
CWHD6	19	10.125
CWHD8	23	12.125

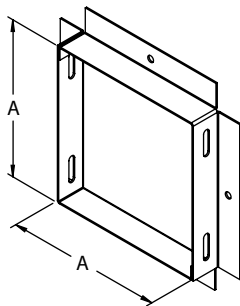
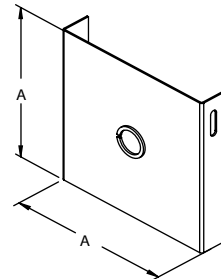


Bracket Hanger Wall Type

Part No.	A	B
CWHW2	4.625	12.0
CWHW4	6.125	15.0
CWHW6	8.125	19.0
CWHW8	10.125	23.0

Closing Plate

Part No.	A	Knockout
CWCP2	2.4	1.75
CWCP4	3.9	1.75
CWCP6	5.9	1.75
CWCP8	7.9	1.75

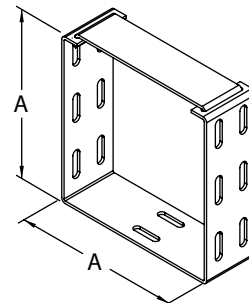


Adapter (Box Connector)

Part No.	A
CWAD2	2.4
CWAD4	3.9
CWAD6	5.9
CWAD8	7.9

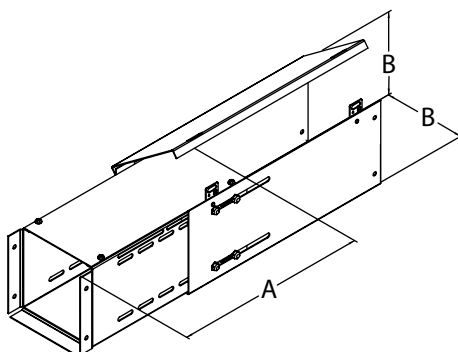
Joiner

Part No.	A
CWJO2	2.5
CWJO4	4
CWJO6	6
CWJO8	8



Telescope Fitting

Part No.	A	B
CWTL2	14	2.5
CWTL4	14	4
CWTL6	14	6
CWTL8	14	8



N1J Series Panel Enclosure NEMA 1



Application

- Designed for indoor use to house controls, instruments and components not requiring oil-tight or dust-tight protection.

Standards

- UL-50 Type 1
- CSA Type 1
- **Complies with**
 - NEMA Type 1
 - IEC 529, IP30

Construction

- Formed and spot welded from 16 gauge steel.
- Formed steel covers close by use of slotted quarter turn latch.
- Full swing door using butt hinges.
- Through holes in back for wall mounting.
- Bonding stud is provided on the door and a grounding stud is provided on the box.
- Includes 14 gauge steel inner panel.

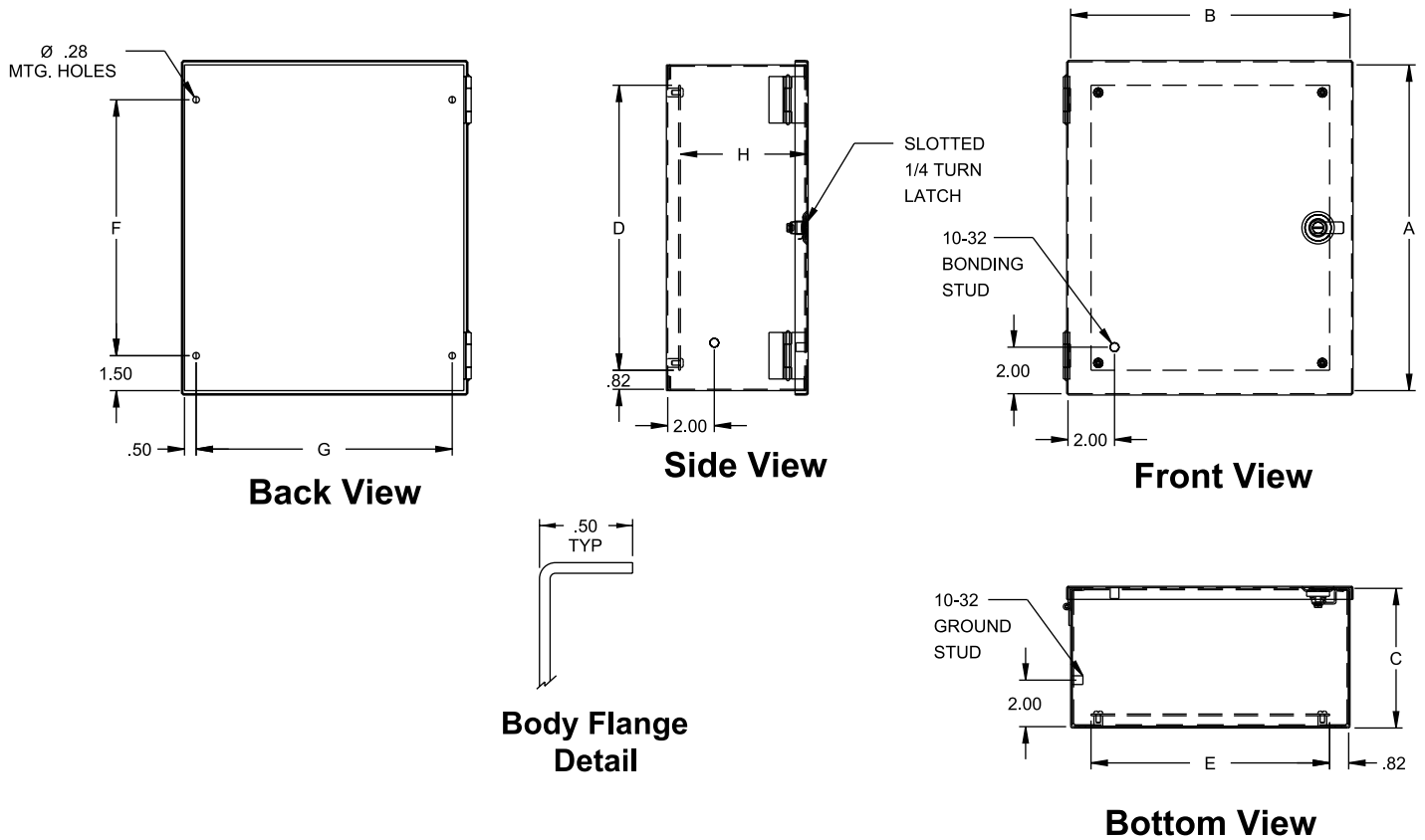
Finish

- Enclosure and cover are finished in ANSI/ASA 61 gray powder coating.
- Inner panel is finished in white powder coating

Accessories

- Additional Inner Panels

N1J Series Panel Enclosure NEMA 1



Part No.	Overall Dimensions			Panel Size		Centers			Ship Wt. lbs.
	A	B	C	D	E	F	G	H	
N1J664	6	6	4	4.25	4.25	3.00	5.00	3.43	5
N1J864	8	6	4	6.25	4.25	5.00	5.00	3.43	6
N1J884	8	8	4	6.25	6.25	5.00	7.00	3.43	7
N1J1084	10	8	4	8.25	6.25	7.00	7.00	3.43	8
N1J10104	10	10	4	8.25	8.25	7.00	9.00	3.43	9
N1J12104	12	10	4	10.25	8.25	9.00	9.00	3.43	11
N1J12124	12	12	4	10.25	10.25	9.00	11.00	3.43	13
N1J14124	14	12	4	12.25	10.25	11.00	11.00	3.43	14
N1J886	8	8	6	6.25	6.25	5.00	7.00	5.43	7
N1J1086	10	8	6	8.25	6.25	7.00	7.00	5.43	10
N1J10106	10	10	6	8.25	8.25	7.00	9.00	5.43	11
N1J12106	12	10	6	10.25	8.25	9.00	9.00	5.43	12
N1J12126	12	12	6	10.25	10.25	9.00	11.00	5.43	15
N1J14126	14	12	6	12.25	10.25	11.00	11.00	5.43	16
N1J16126	16	12	6	14.25	10.25	13.00	11.00	5.43	16
N1J20126	20	12	6	18.25	10.25	17.00	11.00	5.43	22
N1J12128	12	12	8	10.25	10.25	9.00	11.00	7.43	17
N1J14128	14	12	8	12.25	10.25	11.00	11.00	7.43	18

N1A Series Panel Enclosure NEMA 1



Application

- Designed for indoor use to house controls, instruments and components not requiring oil-tight or dust-tight protection.

Standards

- UL 50 Type 1 on models marked¹
- CSA Type 1

Complies with

- NEMA Type 1
- IEC 529, IP30

Construction

- Enclosure is formed and spot welded from 14 gauge steel.
- Removable 12 or 14 gauge inner panel is mounted in the rear of the enclosure on collar studs.
- Removable door is mounted on slip hinges.
- Door is fastened with a slotted quarter turn latch; doors 30" and higher are provided with two latches.
- A bonding stud is provided on the door and a grounding stud is provided in the box.
- Mounting holes are provided in the rear of the enclosure.

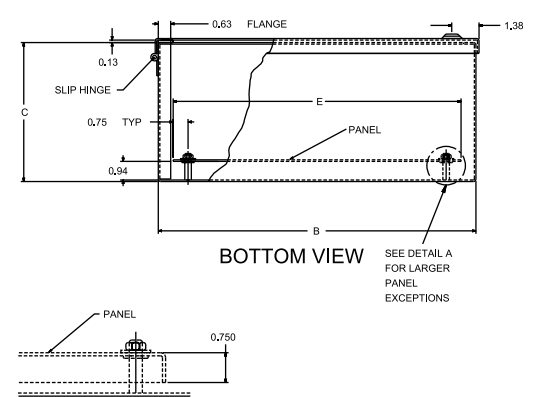
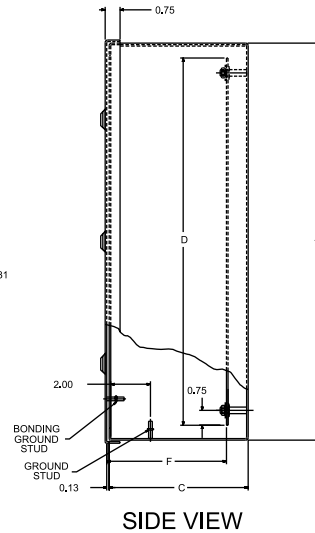
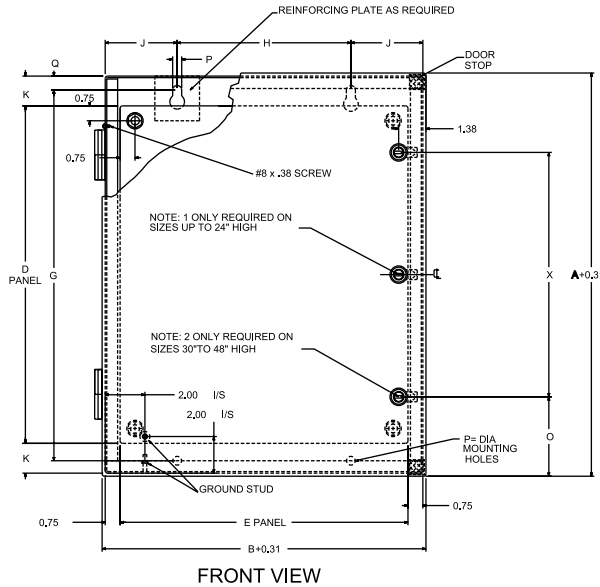
Finish

- Enclosure and door are finished in ANSI/ASA 61 gray powder coating.
- Inner panel is finished in white powder coating.

Accessories

- Additional inner panels
...see E4 page 385
- Lock kit for NEMA 1 enclosures (Part No. 1427LKN1)...see E4 page 379
- Louvered ventilating plates
...see E4 page 396
- Window kits...see E4 page 391
- Padlock Adaptor (Part No. EJPA)
...see E4 page 383

N1A Series Panel Enclosure NEMA 1



Detail A
Typ. for N1A423012,
N1A423612 and N1A483612

When A=	X=
30	18.00
36	22.00
42	26.00
48	30.00

Part No.	Dimensions			Panel Size		Panel No. of Gauge Studs	Mounting Dimensions				Panel Clearance			Ship Wt. lbs		
	A	B	C	D	E		G	H	J	Q	P	F	K		O	
N1A16127 ^{1,2}	16	12	7	13	10.50	14	4	13.88	7.00	2.50	1.06	0.31	6.04	1.5	—	25
N1A16167 ^{1,2}	16	16	7	13	14.50	14	4	13.88	11.00	2.50	1.06	0.31	6.04	1.5	—	30
N1A16207 ^{1,2}	16	20	7	13	18.50	14	4	13.88	15.00	2.50	1.06	0.31	6.04	1.5	—	36
N1A20167 ^{1,2}	20	16	7	17	14.50	14	4	17.88	11.00	2.50	1.06	0.31	6.04	1.5	—	37
N1A20207 ^{1,2}	20	20	7	17	18.50	14	4	17.88	15.00	2.50	1.06	0.31	6.04	1.5	—	43
N1A24167 ^{1,2}	24	16	7	21	14.50	14	4	21.88	11.00	2.50	1.06	0.31	6.04	1.5	—	43
N1A24207 ^{1,2}	24	20	7	21	18.50	14	4	21.88	15.00	2.50	1.06	0.31	6.04	1.5	—	51
N1A24247 ^{1,2}	24	24	7	21	22.50	12	4	21.88	19.00	2.50	1.06	0.31	6.01	1.5	—	67
N1A30207 ^{1,2}	30	20	7	26	18.50	12	6	27.50	12.75	3.63	1.25	0.44	6.01	2.0	6.16	67
N1A30247 ^{1,2}	30	24	7	26	22.50	12	6	27.50	16.75	3.63	1.25	0.44	6.01	2.0	6.16	80
N1A36247 ^{1,2}	36	24	7	32	22.50	12	6	33.50	16.75	3.63	1.25	0.44	6.01	2.0	7.16	94
N1A36307 ²	36	30	7	32	28.50	12	8	33.50	22.75	3.63	1.25	0.44	6.01	2.0	7.16	114
N1A16129 ^{1,2}	16	12	9	13	10.50	14	4	13.88	7.00	2.50	1.06	0.31	8.04	1.5	—	27
N1A20169 ^{1,2}	20	16	9	17	14.50	14	4	17.88	11.00	2.50	1.06	0.31	8.04	1.5	—	31
N1A20209 ^{1,2}	20	20	9	17	18.50	14	4	17.88	15.00	2.50	1.06	0.31	8.04	1.5	—	47
N1A20249 ^{1,2}	20	24	9	17	22.50	14	4	17.88	19.00	2.50	1.06	0.31	8.04	1.5	—	55
N1A24209 ^{1,2}	24	20	9	21	18.50	14	4	21.88	15.00	2.50	1.06	0.31	8.04	1.5	—	55
N1A24249 ^{1,2}	24	24	9	21	22.50	12	4	21.88	19.00	2.50	1.06	0.31	8.01	1.5	—	125
N1A30209 ^{1,2}	30	20	9	26	18.50	12	6	27.50	12.75	3.63	1.25	0.44	8.01	2.0	6.16	72
N1A30249 ^{1,2}	30	24	9	26	22.50	12	6	27.50	16.75	3.63	1.25	0.44	8.01	2.0	6.16	85
N1A30309 ²	30	30	9	26	28.50	12	8	27.50	22.75	3.63	1.25	0.44	8.01	2.0	6.16	102
N1A36249 ^{1,2}	36	24	9	32	22.50	12	6	33.50	16.75	3.63	1.25	0.44	8.01	2.0	7.16	107
N1A36309 ²	36	30	9	32	28.50	12	8	33.50	22.75	3.63	1.25	0.44	8.01	2.0	7.16	120
N1A42249 ^{1,2}	42	24	9	38	22.50	12	6	39.50	16.75	3.63	1.25	0.44	8.01	2.0	8.16	111
N1A242012 ^{1,2}	24	20	12	21	18.50	14	4	21.88	15.00	2.50	1.06	0.31	11.04	1.5	—	61
N1A242412 ^{1,2}	24	24	12	21	22.50	12	4	21.88	19.00	2.50	1.06	0.31	11.01	1.5	—	132
N1A302412 ^{1,2}	30	24	12	26	22.50	12	6	27.50	16.75	3.63	1.25	0.44	11.01	2.0	6.16	94
N1A363012 ²	36	30	12	32	28.50	12	8	33.50	22.75	3.63	1.25	0.44	11.01	2.0	7.16	129
N1A423012	42	30	12	38	28.50	12	8	39.50	22.75	3.63	1.25	0.44	11.01	2.0	8.16	144
N1A423612	42	36	12	38	34.50	12	8	39.50	28.75	3.63	1.25	0.44	11.01	2.0	8.16	169
N1A483612	48	36	12	44	34.50	12	8	45.50	28.75	3.63	1.25	0.44	11.01	2.0	9.16	197

¹ UL 50 Listed Type 1

² Flat Panel

1420 Series Panel Enclosure NEMA 1



Application

- Designed for indoor use to house controls, instruments and components which do not require oil-tight or dust-tight protection.

Standards

- UL 508 Type 1 on models marked¹
- CSA Type 1

Complies with

- NEMA Type 1
- IEC 529, IP30

Construction

- Enclosure is formed and spot welded from 14 gauge steel.
- Removable 12 gauge inner panel is mounted to the rear of the enclosure on collar studs.
- Removable door is attached with slip hinges.
- To remove door, a tool is required to remove the #8 screw which captivates hinge.
- Door is fastened with a slotted 1/4 turn latch; doors 30" and higher are provided with two latches.
- A bonding stud is provided on the door and a grounding stud is provided in the box.

Finish

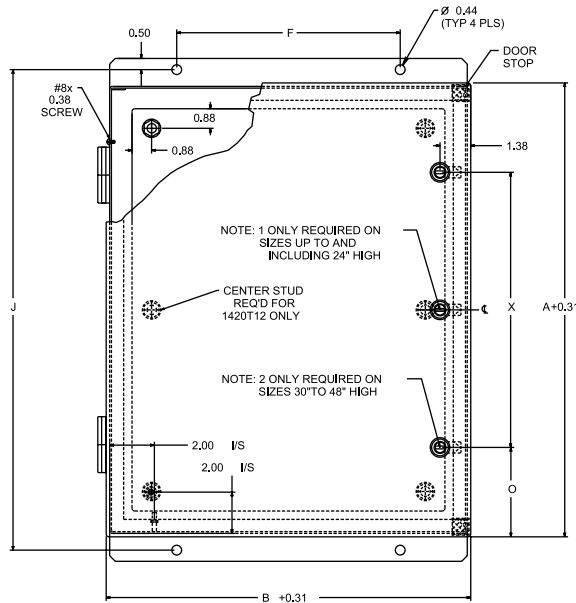
- Enclosure and door are finished in ANSI/ASA 61 gray powder coating.
- Inner panel is finished in white powder coating.

Accessories

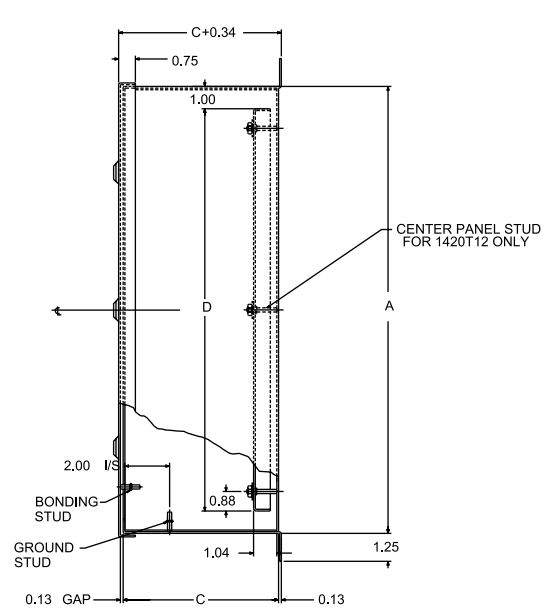
- Additional inner panels
...see E4 page 385
- Lock kit for NEMA 1 enclosures (Part No. 1427LKN1)...see E4 page 379
- Louvered ventilating plates
...see E4 page 396
- Window kits...see E4 page 391
- Padlock Adaptor (Part No. EJPA)
...see E4 page 383

1420 Series Panel Enclosure

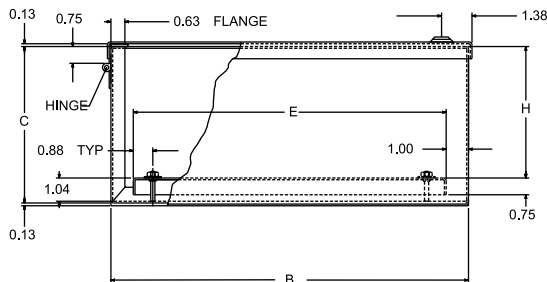
NEMA 1



FRONT VIEW



SIDE VIEW



BOTTOM VIEW

When A=	X=
30	18.00
36	22.00
42	26.00
48	30.00

Part No.	Mounting Centers					Panel Size			O	Ship Wt. lbs
	A	B	C	J	F	D	E	H		
1420B7 ^{1,2}	16	12	7	17.50	9.50	14	10	5.88	—	26
1420C7 ^{1,2}	20	16	7	21.50	10.00	18	14	5.88	—	39
1420D7 ^{1,2}	20	20	7	21.50	14.00	18	18	5.88	—	48
1420E7 ¹	24	20	7	25.50	14.00	22	18	5.88	—	53
1420E9 ¹	24	20	9	25.50	14.00	22	18	7.88	—	60
1420EM9 ¹	24	24	9	25.50	18.00	22	22	7.88	—	71
1420F7 ¹	30	20	7	31.50	14.00	28	18	5.88	6.16	67
1420G7 ¹	30	24	7	31.50	18.00	28	22	5.88	6.16	79
1420G9 ¹	30	24	9	31.50	18.00	28	22	7.88	6.16	84
1420G12 ¹	30	24	12	31.50	18.00	28	22	10.88	6.16	92
1420G16 ¹	30	24	16	31.50	18.00	28	22	14.88	6.16	105
1420H7 ¹	36	24	7	37.50	18.00	34	22	5.88	7.16	90
1420H9 ¹	36	24	9	37.50	18.00	34	22	7.88	7.16	98
1420P9	36	30	9	37.50	24.00	34	28	7.88	7.16	118
1420P12	36	30	12	37.50	24.00	34	28	10.88	7.16	128
1420P16	36	30	16	37.50	24.00	34	28	14.88	7.16	144
1420Q9 ¹	42	24	9	43.50	18.00	40	22	7.88	8.16	111
1420R12	42	30	12	43.50	24.00	40	28	10.88	8.16	142
1420S12	42	36	12	43.50	30.00	40	34	10.88	8.16	156
1420T12	48	36	12	49.50	30.00	46	34	10.88	9.16	214

¹ UL Listed

² Flat Panel

1416 Series Ventilated Component Case NEMA 1



Application

- Designed to provide mechanical protection for components requiring ventilation.
- Suitable for use where heat dissipation is required.

Standards

Complies with

- NEMA Type 1

Construction

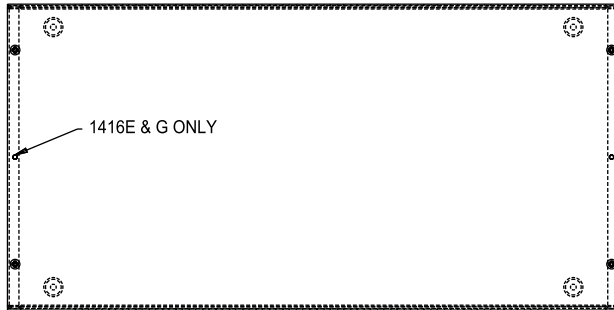
- Base is formed from 16 gauge steel with two 0.5"/0.75" conduit knockouts located in each end.
- Four .125" high raised dimples with mounting holes are provided on the base.
- Cover is formed from 18 gauge steel with 0.235" x 1.5" ventilating slots (0.199" x 1.12" on E & G only).
- Screw holes and offsets in the cover allow easy assembly.

Finish

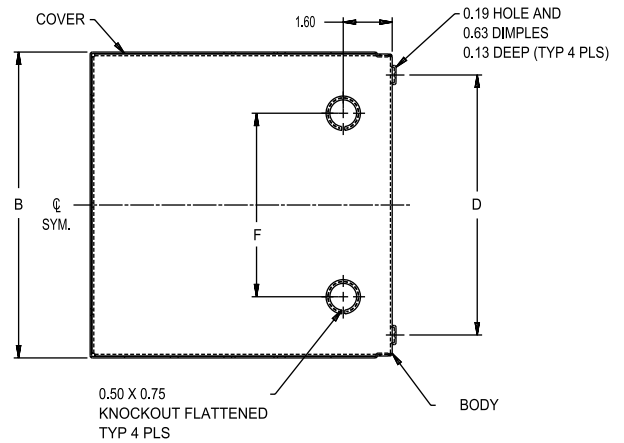
- Base and cover are finished in ANSI/ASA 61 gray powder coating.

1416 Series Ventilated Component Case

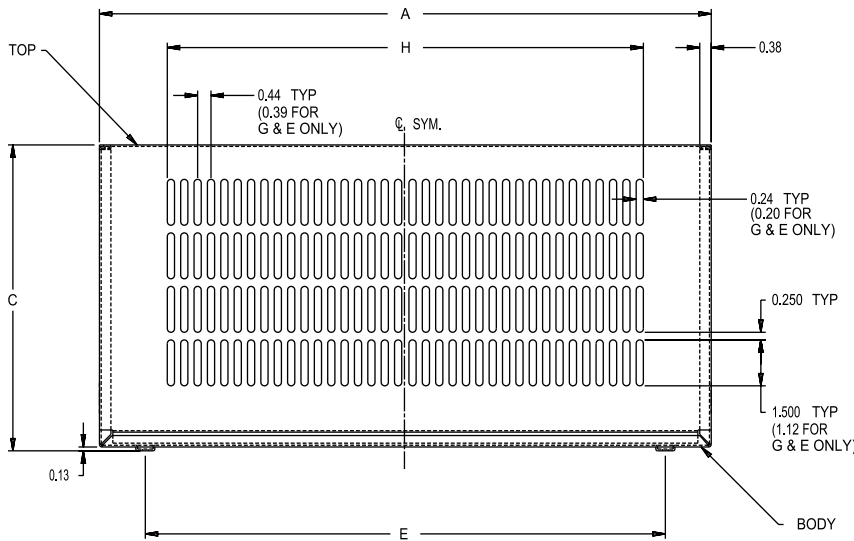
NEMA 1



TOP VIEW



SIDE VIEW



FRONT VIEW

Part No.	Dimensions						Ventilated Area		Ship Wt. lbs.
	A	B	C	D	E	F	G	H	
1416E	6	4	4	2.5	4	2	2.50	4.06	2
1416G	10	4	4	2.5	7	2	2.50	8.31	2
1416I	10	6	6	4.5	7	3	3.25	7.68	4
1416K	11	7	7	5.5	8	4	5.00	7.68	6
1416M	12	8	8	6.5	9	5	5.00	10.31	8
1416O	15	10	8	8.5	12	6	5.00	12.93	10
1416Q	20	10	8	8.5	17	6	5.00	18.18	12
1416T	20	10	10	8.5	17	6	6.75	15.56	14

1439 Series Surface Mount Panel Enclosure NEMA 1



Application

- Designed for indoor use to enclose controls, instruments, and components which do not require oil-tight or dust-tight protection.
- Ideal for applications where components may be easily mounted and wired prior to installation of wrapper and door.

Standards

Complies with

- NEMA Type 1

Construction

- Three piece assembly consisting of a base, wrapper, and door.
- Components are attached and secured with metal screws.
- 14 gauge reverse formed base provides clearance for mounting hardware.
- Wrapper is available in three depths: 4", 6", and 8".
- Punched for left or right hinging of the door and ease of assembly.
- Wrapper is formed from 16 gauge steel, with no knock-outs in the sides.
- Door assembly formed from 16 gauge steel.
- Door has a punched finger hole for opening, which will receive a flush lock.

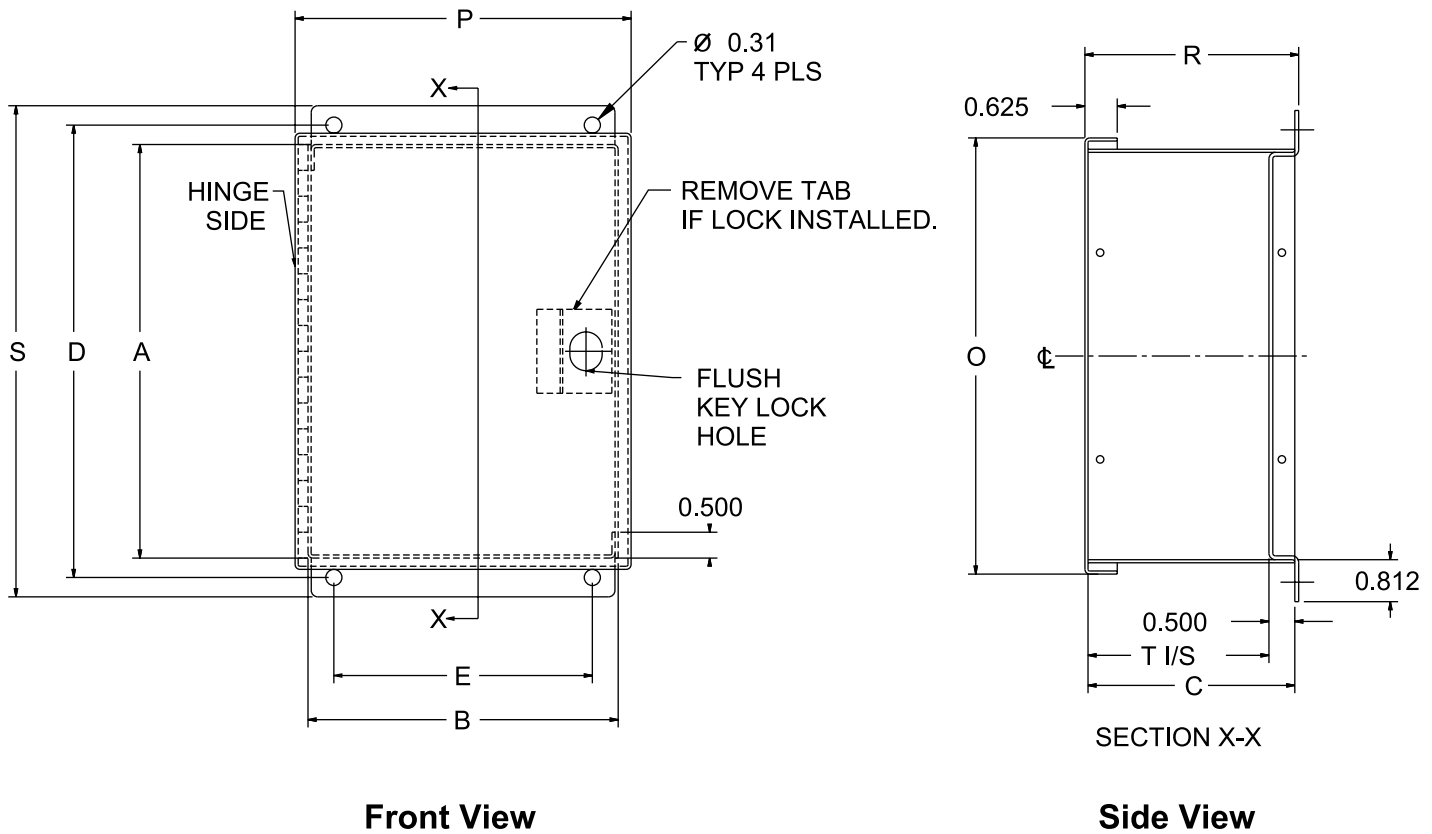
Finish

- Base, wrapper and door are finished in ANSI/ASA 61 gray powder coating.

Accessories

- Surface lock kit (Part No. **1427Z**)
...see E4 page **379**
- Padlock Adaptor (Part No. **EJPA**)
...see E4 page **383**

1439 Series Surface Mount Panel Enclosure NEMA 1



Part No.	Wrapper Size	Wrapper Size			Mounting Centers		Overall Dimensions					Ship Wt. lbs
		A	B	C	D	E	P	R	S	T	O	
1439C4	4" Deep	8	6	4	8.75	5	6.5	4.13	9.5	3.5	8.44	5
1439D4		10	8	4	10.75	7	8.5	4.13	11.5	3.5	10.44	7
1439E4		12	10	4	12.75	9	10.5	4.13	13.5	3.5	12.44	10
1439G4		16	12	4	16.75	11	12.5	4.13	17.5	3.5	16.44	14
1439J4		20	16	4	20.75	15	16.5	4.13	21.5	3.5	20.44	20
1439L4		24	20	4	24.75	19	20.5	4.13	25.5	3.5	24.44	28
1439C6	6" Deep	8	6	6	8.75	5	6.5	6.13	9.5	5.5	8.44	6
1439D6		10	8	6	10.75	7	8.5	6.13	11.5	5.5	10.44	9
1439E6		12	10	6	12.75	9	10.5	6.13	13.5	5.5	12.44	11
1439G6		16	12	6	16.75	11	12.5	6.13	17.5	5.5	16.44	16
1439J6		20	16	6	20.75	15	16.5	6.13	21.5	5.5	20.44	22
1439L6		24	20	6	24.75	19	20.5	6.13	25.5	5.5	24.44	31
1439C8	8" Deep	8	6	8	8.75	5	6.5	8.13	9.5	7.5	8.44	7
1439D8		10	8	8	10.75	7	8.5	8.13	11.5	7.5	10.44	10
1439E8		12	10	8	12.75	9	10.5	8.13	13.5	7.5	12.44	13
1439G8		16	12	8	16.75	11	12.5	8.13	17.5	7.5	16.44	18
1439J8		20	16	8	20.75	15	16.5	8.13	21.5	7.5	20.44	26
1439L8		24	20	8	24.75	19	20.5	8.13	25.5	7.5	24.44	34

Screw Cover Enclosures - Type 3R *with Knockouts*



Application

- Designed for use as a wiring/junction box.
- Provides protection against rain, sleet, snow and dripping water.

Standards

- UL-50 Type 3R
- CSA Type 3R
- **Complies with:**
 - NEMA Type 3R
 - IEC 60529, IP32

Construction

- Formed and spot welded from 16 or 14 gauge galvanized steel.
- Drip-shield top and seam-free sides, front and back.
- Slip-on removable cover fastened with plated steel screws.
- Door handles on body type C enclosures.
- Embossed mounting holes on back of enclosure.
- Easily removed knockouts on bottom of enclosure.
- Padlocking hasp.
- No Gasket

Finish

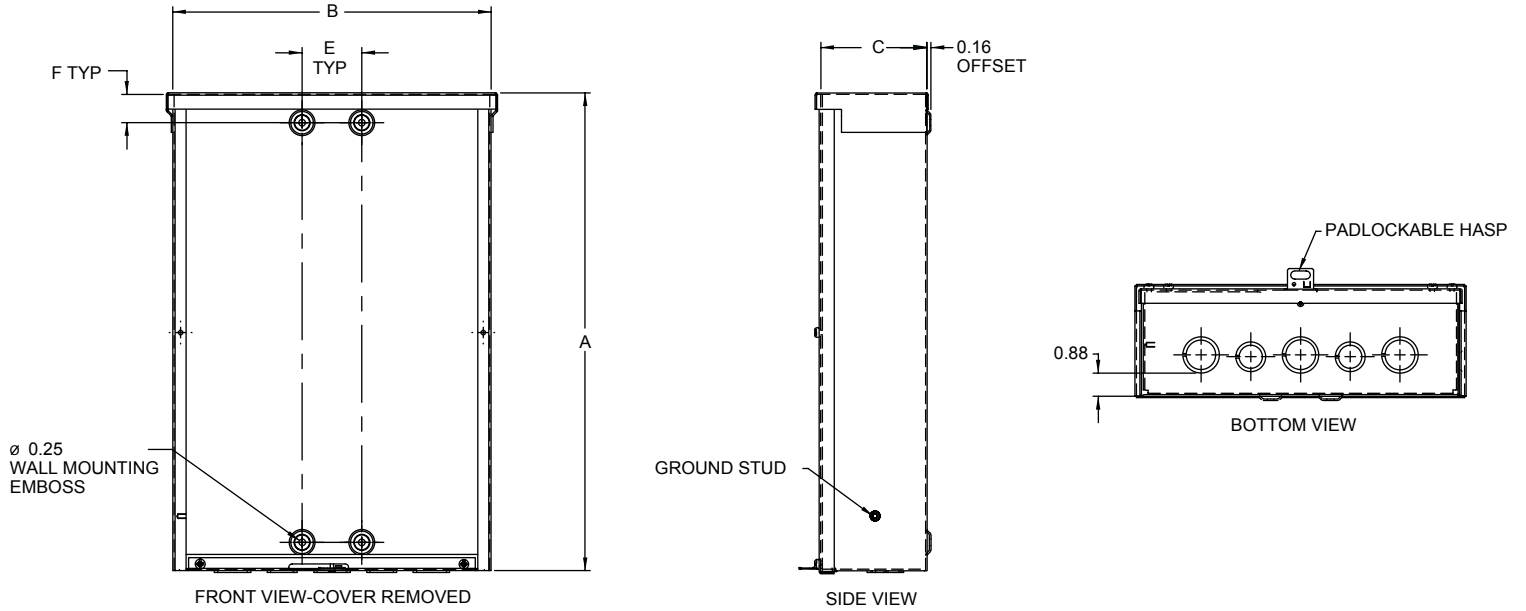
- Enclosure and cover are finished in ANSI/ASA 61 gray powder coating.

Screw Cover Enclosures - Type 3R with Knockouts

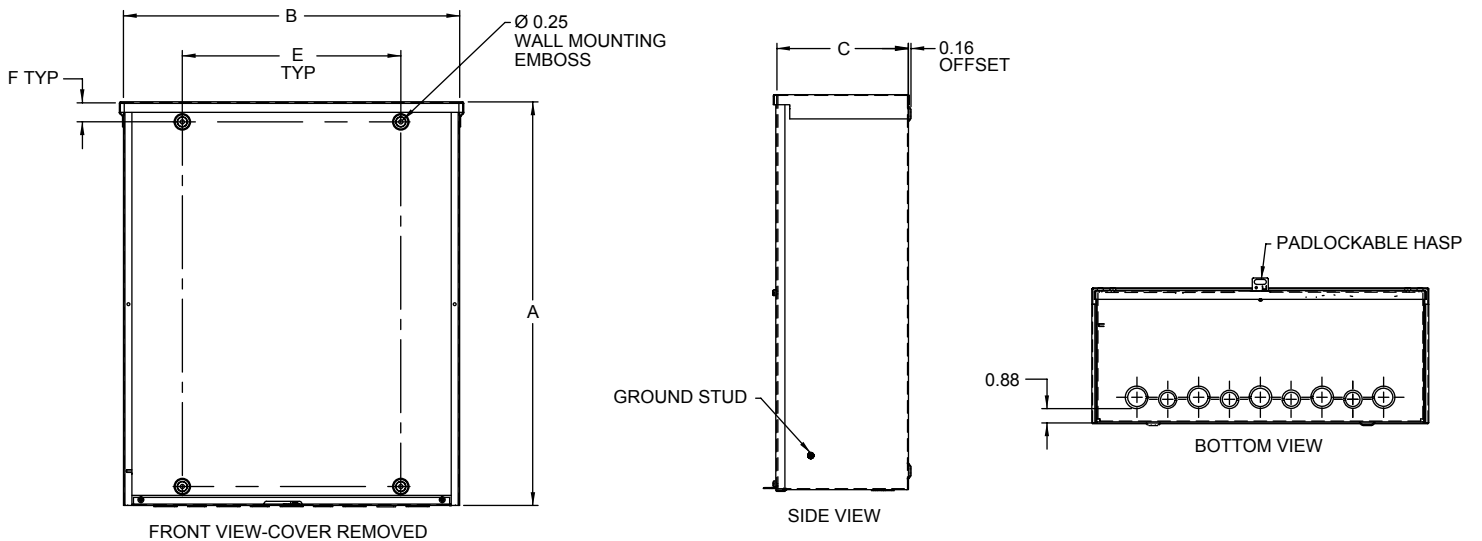
Part Number	Body Type	Body Dimensions				Mounting		Knockout Pattern (see next page)	Shipping Wt. lbs
		A	B	C	D	E	F		
C3R444SC	A	4	4	4	-	1.88	2.00	2-3	2
C3R644SC	A	6	4	4	-	1.88	1.06	2-3	2
C3R1244SC	A	12	4	4	-	1.88	1.06	2-3	3
C3R664SC	A	6	6	4	-	2.25	1.06	2-3-4	4
C3R864SC	A	8	6	4	-	2.25	1.06	2-3-4	5
C3R884SC	A	8	8	4	-	2.25	1.06	6-7-8-9	5
C3R1084SC	A	10	8	4	-	2.25	1.06	6-7-8-9	7
C3R1284SC	A	12	8	4	-	2.25	1.06	6-7-8-9	7
C3R10104SC	A	10	10	4	-	2.25	1.06	3-4-5-6-7	7
C3R12104SC	A	12	10	4	-	2.25	1.06	3-4-5-6-7	9
C3R12124SC	A	12	12	4	-	2.25	1.06	3-4-5-6-7	10
C3R18124SC	A	18	12	4	-	2.25	1.06	3-4-5-6-7	13
C3R18184SC	B	18	18	4	-	13.00	1.12	1-2-3-4-5-6-7-8-9	19
C3R666SC	A	6	6	6	-	2.25	1.06	2-3-4	5
C3R1866SC	A	18	6	6	-	2.25	1.06	2-3-4	12
C3R886SC	A	8	8	6	-	2.25	1.06	6-7-8-9	6
C3R1086SC	A	10	8	6	-	2.25	1.06	6-7-8-9	11
C3R10106SC	A	10	10	6	-	2.25	1.06	3-4-5-6-7	13
C3R1286SC	A	12	8	6	-	2.25	1.06	6-7-8-9	11
C3R12106SC	A	12	10	6	-	2.25	1.06	3-4-5-6-7	12
C3R12126SC	A	12	12	6	-	2.25	1.06	3-4-5-6-7	12
C3R15126SC	A	15	12	6	-	2.25	1.06	3-4-5-6-7	13
C3R16126SC	A	16	12	6	-	2.25	1.06	3-4-5-6-7	14
C3R18126SC	A	18	12	6	-	2.25	1.06	3-4-5-6-7	15
C3R18186SC	B	18	18	6	-	13.00	1.12	1-2-3-4-5-6-7-8-9	16
C3R24126SC	B	24	12	6	-	13.00	1.12	3-4-5-6-7	25
C3R24186SC	B	24	18	6	-	13.00	1.12	1-2-3-4-5-6-7-8-9	33
C3R24246SC	B	24	24	6	-	13.00	1.12	1-2-3-4-5-6-7-8-9	40
C3R888SC	A	8	8	8	-	2.25	1.06	6-7-8-9	8
C3R2488SC	A	24	8	8	-	2.25	1.06	6-7-8-9	17
C3R12128SC	A	12	12	8	-	2.25	1.06	3-4-5-6-7	13
C3R15128SC	A	15	12	8	-	2.25	1.06	3-4-5-6-7	14
C3R18128SC	A	18	12	8	-	2.25	1.06	3-4-5-6-7	19
C3R24168SC	B	18	16	8	-	13.00	1.12	3-4-5-6-7	22
C3R18188SC	B	18	18	8	-	13.00	1.12	1-2-3-4-5-6-7-8-9	25
C3R24188SC	B	24	18	8	-	13.00	1.12	1-2-3-4-5-6-7-8-9	38
C3R24208SC	B	24	20	8	-	13.00	1.12	1-2-3-4-5-6-7-8-9	39
C3R24248SC	C	24	24	8	12.04	13.00	1.12	1-2-3-4-5-6-7-8-9	44
C3R30248SC	C	30	24	8	15.04	13.00	1.12	1-2-3-4-5-6-7-8-9	53
C3R48368SC	C	48	36	8	24.04	33.00	1.50	1-2-3-4-5-6-7-8-9	150
C3R181810SC	C	18	18	10	9.04	13.00	1.12	1-2-3-4-5-6-7-8-9	25
C3R241810SC	C	24	18	10	12.04	13.00	1.12	1-2-3-4-5-6-7-8-9	38
C3R242410SC	C	24	24	10	12.04	13.00	1.12	1-2-3-4-5-6-7-8-9	49
C3R302410SC	C	30	24	10	15.04	13.00	1.50	1-2-3-4-5-6-7-8-9	55
C3R242412SC	C	24	24	12	12.04	13.00	1.12	1-2-3-4-5-6-7-8-9	54
C3R303012SC	C	30	30	12	15.04	27.00	1.50	1-2-3-4-5-6-7-8-9	125
C3R363012SC	C	36	30	12	18.04	27.00	1.50	1-2-3-4-5-6-7-8-9	128
C3R363612SC	C	36	36	12	18.04	33.00	1.50	1-2-3-4-5-6-7-8-9	130
C3R303016SC	C	30	30	16	15.04	27.00	1.50	1-2-3-4-5-6-7-8-9	127
C3R483616SC	C	48	36	16	24.04	33.00	1.50	1-2-3-4-5-6-7-8-9	155

Screw Cover Enclosures - Type 3R with Knockouts

Body Type A

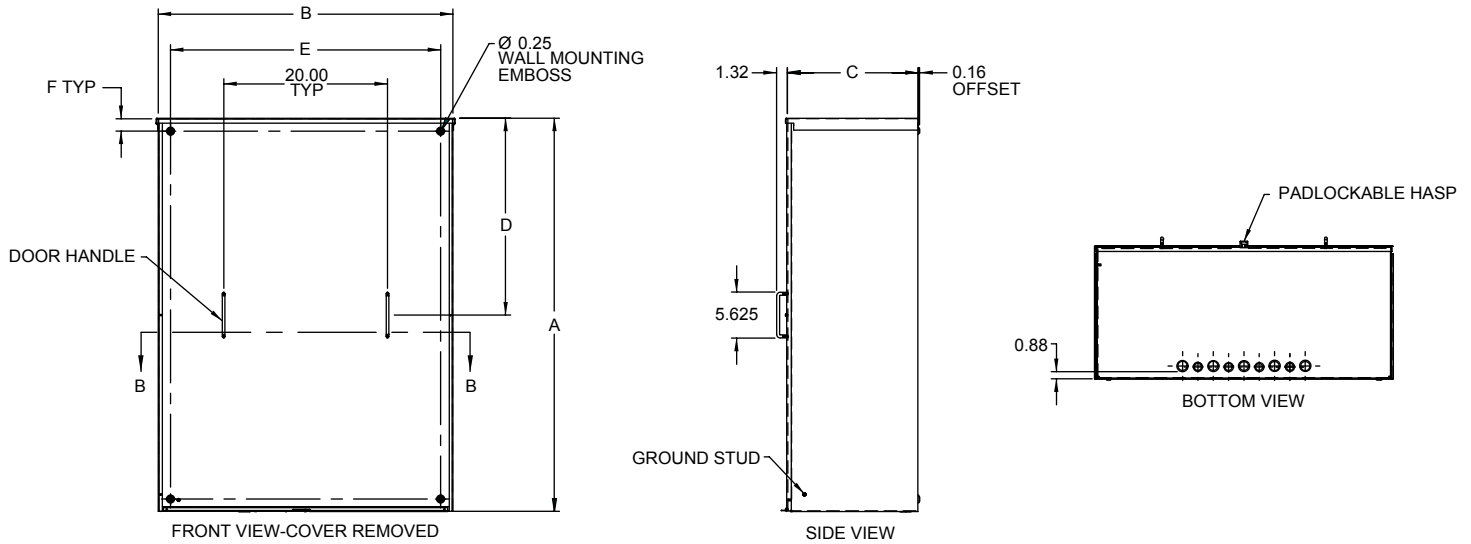


Body Type B

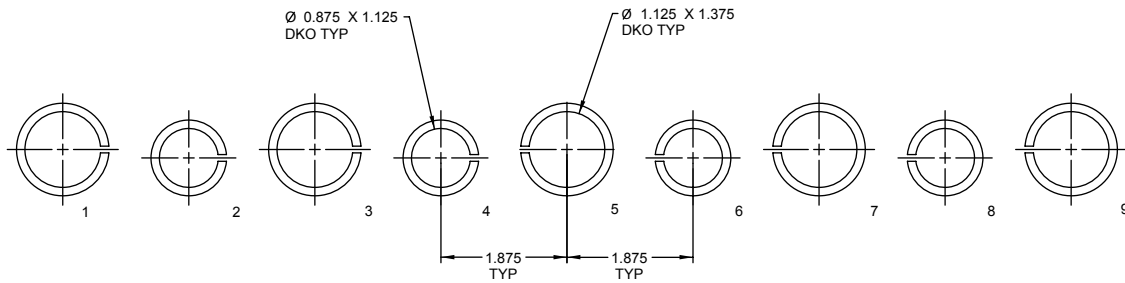


Screw Cover Enclosures - Type 3R with Knockouts

Body Type C



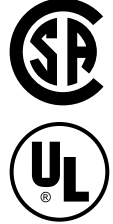
Knockout Pattern



Small Hinged Cover Enclosures - Type 3R *with Knockouts*



Panel
Sold
Separately



Application

- Designed for use as a wiring/junction box.
- Provides protection against rain, sleet, snow and dripping water.

Standards

- UL-50 Type 3R
- CSA Type 3R
- **Complies with**
 - NEMA Type 3R
 - IEC 60529, IP32

Construction

- Formed and spot welded from 16 gauge galvanized steel.
- Drip-shield top and seam-free sides, front and back.
- Galvanized steel hinge has stainless steel pin.
- Provisions for padlocking on zinc-plated draw pull catch.
- Easily removed knockouts on bottom of enclosure.
- Panel studs provided for mounting optional panels.
- External mounting feet
- Oil resistant gaskets are permanently secured.

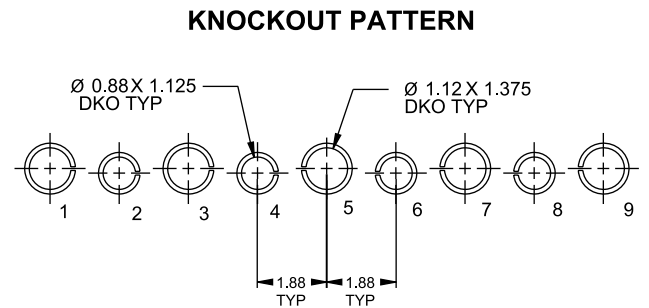
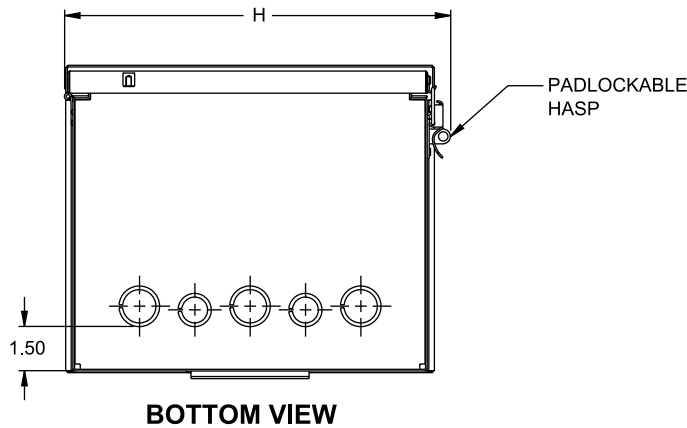
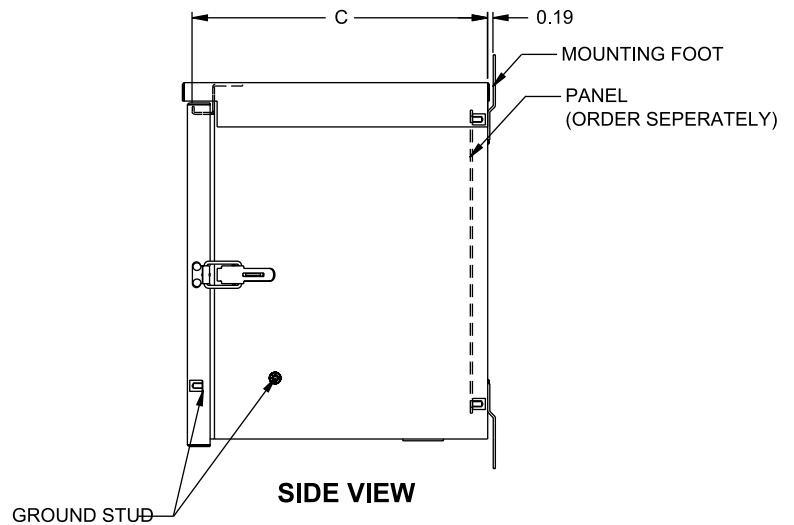
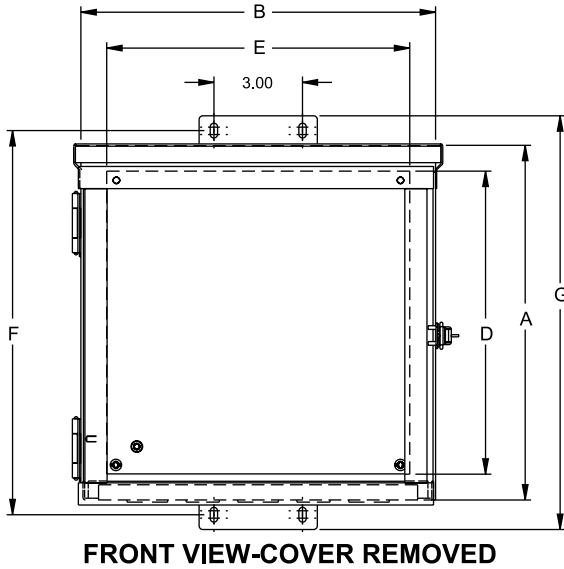
Finish

- Enclosure and cover are finished in ANSI/ASA 61 gray powder coating.

Accessories

- Inner Panel

Small Hinged Cover Enclosures - Type 3R with Knockouts

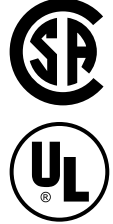


Part Number	Optional Panel Part Number	A	B	C	D	E	F	G	H	Knockout Pattern	Shipping Wt. lbs
C3R644HCR	N1JP64	6	4	4	4.25	2.25	7.00	8.00	5.10	2-3-4	3
C3R664HCR	N1JP66	6	6	4	4.25	4.25	7.00	8.00	7.10	2-3-4	5
C3R864HCR	N1JP86	8	6	4	6.25	4.25	9.00	10.00	7.10	2-3-4	6
C3R886HCR	N1JP88	8	8	6	6.25	6.25	9.00	10.00	9.10	6-7-8-9	8
C3R1086HCR	N1JP108	10	8	6	8.25	6.25	11.00	12.00	9.10	6-7-8-9	9
C3R12106HCR	N1JP1210	12	10	6	10.25	8.25	13.00	14.00	11.10	3-4-5-6-7	11
C3R12126HCR	N1JP1212	12	12	6	10.25	10.25	13.00	14.00	13.10	3-4-5-6-7	13
C3R121210HCR	N1JP1212	12	12	10	10.25	10.25	13.00	14.00	13.10	3-4-5-6-7	20

Medium Hinged Cover Enclosures - Type 3R *without Knockouts*



**Panel
Sold
Separately**



Application

- Designed for use as a wiring/junction box.
- Provides protection against rain, sleet, snow and dripping water.

Standards

- UL-50 Type 3R
- CSA Type 3R

Complies with

- NEMA Type 3R
- cUL Type 3R
- IEC 60529, IP32

Construction

- Formed and spot welded from 16 or 14 gauge galvanized steel.
- Drip shield top and seam-free sides, front and back.
- 16 gauge galvanized steel continuous hinge has stainless steel pin.
- Cover fastened with captive plated screws.
- Padlocking hasp.
- Collar studs provided for mounting optional panels.
- External mounting feet.
- Oil resistant gaskets are permanently secured.

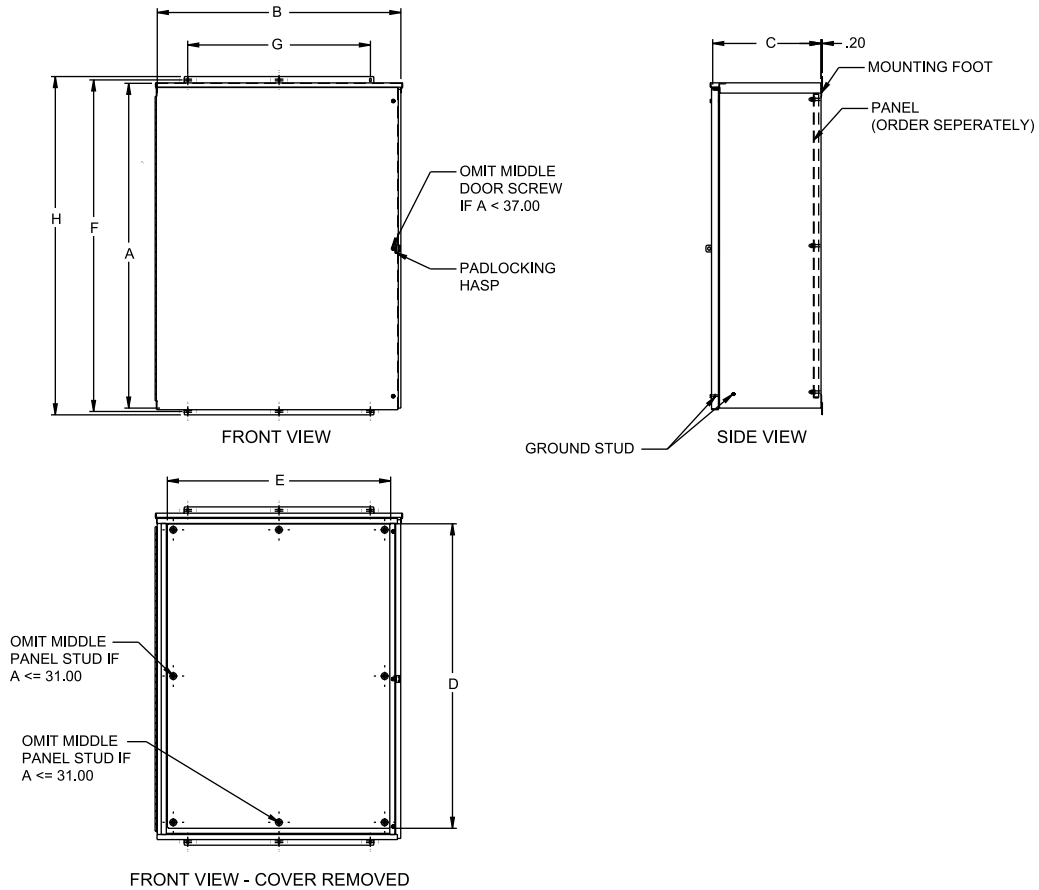
Finish

- Enclosure and cover are finished inside and out in ANSI/ASA 61 gray powder coating.

Accessories

- Inner Panel

Medium Hinged Cover Enclosures - Type 3R *without Knockouts*

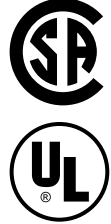


Part Number	Optional Panel	Panel Size			Mounting		Overall H	Shipping Wt. lbs		
	Part Number	A	B	C	D	E			F	G
C3R16126HCR	18P1309	16	12	6	13.00	9.00	17.00	5.00	18.00	17
C3R16166HCR	18P1313	16	16	6	13.00	13.00	17.00	13.00	18.00	18
C3R18186HCR	18P1515	18	18	6	15.00	15.00	19.00	13.00	20.00	20
C3R20166HCR	18P1713	20	16	6	17.00	13.00	21.00	13.00	22.00	25
C3R20208HCR	18P1717	20	20	8	17.00	17.00	21.00	13.00	22.00	38
C3R24208HCR	18P2117	24	20	8	21.00	17.00	25.00	13.00	26.00	41
C3R24248HCR	18P2121	24	24	8	21.00	21.00	25.00	13.00	26.00	53
C3R30248HCR	18P2721	30	24	8	27.00	21.00	31.00	13.00	32.00	62
C3R30308HCR	18P2727	30	30	8	27.00	27.00	31.00	27.00	32.00	64
C3R181810HCR	18P1515	18	18	10	15.00	15.00	19.00	13.00	20.00	22
C3R242410HCR	18P2121	24	24	10	21.00	21.00	25.00	13.00	26.00	59
C3R302410HCR	18P2721	30	24	10	27.00	21.00	31.00	13.00	32.00	71
C3R363610HCR	18P3333	36	36	10	33.00	33.00	37.00	30.00	38.00	82
C3R303012HCR	18P2727	30	30	12	27.00	27.00	31.00	27.00	32.00	102
C3R362412HCR	18P3321	36	24	12	33.00	21.00	37.00	13.00	38.00	102
C3R363012HCR	18P3327	36	30	12	33.00	27.00	37.00	27.00	38.00	103
C3R423012HCR	18P3927	42	30	12	39.00	27.00	43.00	27.00	44.00	113
C3R363612HCR	18P3333	36	36	12	33.00	33.00	37.00	27.00	38.00	119
C3R423612HCR	18P3933	42	36	12	39.00	33.00	43.00	27.00	44.00	131
C3R483612HCR	18P4533	48	36	12	45.00	33.00	49.00	27.00	50.00	153
C3R603612HCR	18P5733	60	36	12	57.00	33.00	61.00	27.00	62.00	176
C3R303016HCR	18P2727	30	30	16	27.00	27.00	31.00	27.00	32.00	105
C3R483616HCR	18P4533	48	36	16	45.00	33.00	49.00	27.00	50.00	155

Hinged Cover Lift-Off Enclosures - Type 3R *without Knockouts*



**Panel
Sold
Separately**



Application

- Designed for use as a wiring/junction box.
- Provides protection against rain, sleet, snow and dripping water.

Standards

- UL-50 Type 3R
- CSA Type 3R
- Complies with**
 - NEMA Type 3R
 - IEC 60529, IP32

Construction

- Formed and spot welded from 16 or 14 gauge galvanized steel.
- Extended height door and seam-free sides, front and back.
- Galvanized steel lift-off hinges with stainless steel pins.
- Cover fastened securely with zinc plated draw pull catches.
- Provisions for padlocking on zinc-plated draw pull catch.
- Embossed mounting holes on back.
- Oil resistant gaskets are permanently secured.

Finish

- Enclosure and cover are finished in ANSI/ASA 61 gray powder coating.

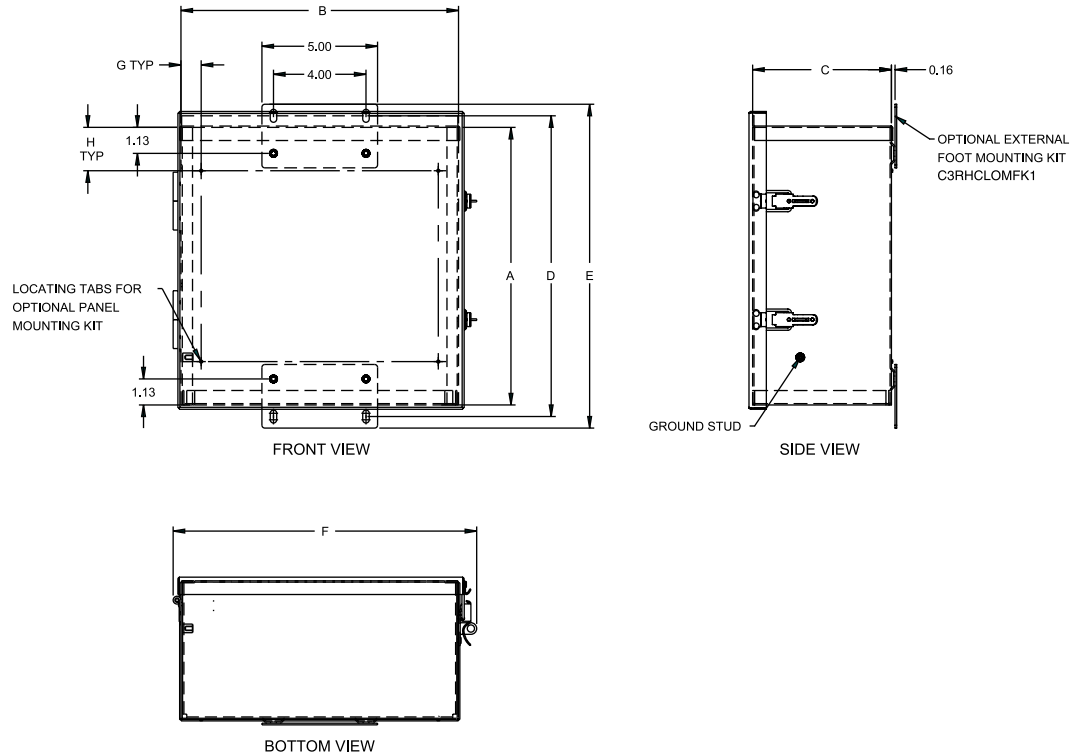
Accessories

- Panel mounting kit
- Inner panel
- Mounting feet

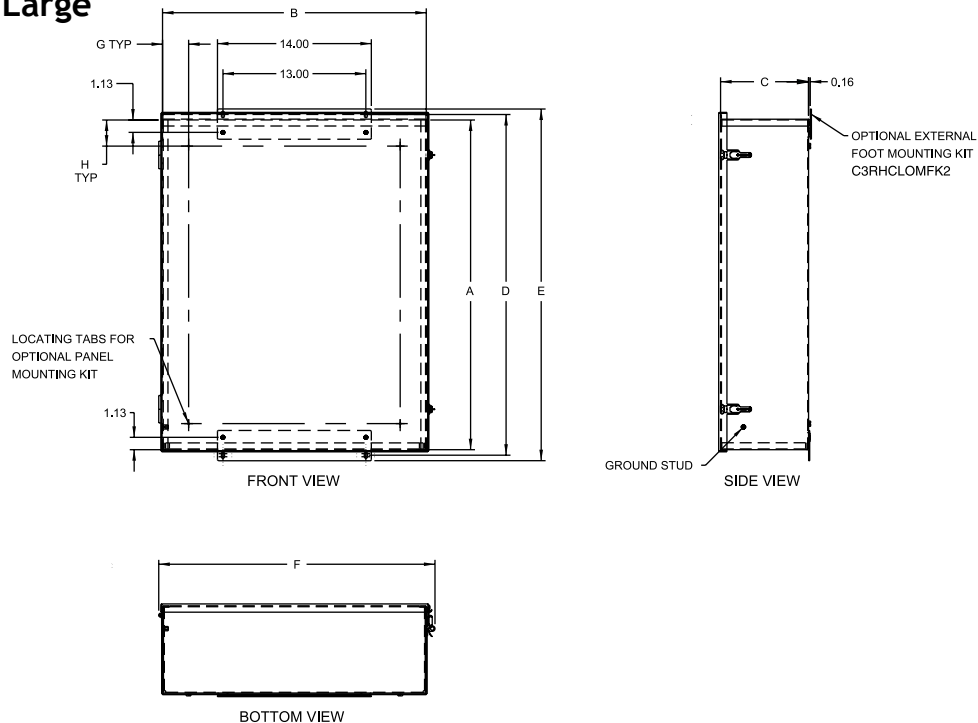
Part Number	Optional Panel	Optional Panel Mounting Kit	Optional Mounting Foot Kit	Optional Panel Size		Mounting	Overall Dim.				Body Gauge	Ship Wt. lbs			
				A	B		C	D	E	F			G	H	
C3R864HCLO	14R0505	C3RHCLOPK1	C3RHCLOMFK1	8	6	4	4.88	4.88	9	10	7.12	0.88	1.88	16	5
C3R886HCLO	14R0705	C3RHCLOPK1	C3RHCLOMFK1	8	8	6	6.75	4.88	9	10	9.12	0.88	1.88	16	7
C3R1086HCLO	14R0707	C3RHCLOPK1	C3RHCLOMFK1	10	8	6	6.75	6.88	11	12	9.12	0.88	1.88	16	9
C3R12106HCLO	14R0909	C3RHCLOPK1	C3RHCLOMFK1	12	10	6	8.75	8.88	13	14	11.12	0.88	1.88	16	11
C3R12126HCLO	14R1109	C3RHCLOPK1	C3RHCLOMFK1	12	12	6	10.75	8.88	13	14	13.12	0.88	1.88	16	12
C3R16126HCLO	14R1311	C3RHCLOPK1	C3RHCLOMFK1	16	12	6	12.75	10.88	17	18	13.12	0.88	1.88	16	15
C3R16166HCLO	18P1313	C3RHCLOPK2	C3RHCLOMFK2	16	16	6	13.00	13.00	17	18	17.12	2.38	2.38	16	23
C3R20166HCLO	18P1713	C3RHCLOPK2	C3RHCLOMFK2	20	16	6	17.00	13.00	21	22	17.12	2.38	2.38	16	27
C3R20208HCLO	18P1717	C3RHCLOPK2	C3RHCLOMFK2	20	20	8	17.00	17.00	21	22	21.12	2.38	2.38	16	36
C3R24208HCLO	18P2117	C3RHCLOPK2	C3RHCLOMFK2	24	20	8	21.00	17.00	25	26	21.12	2.38	2.38	16	43
C3R24248HCLO	18P2121	C3RHCLOPK2	C3RHCLOMFK2	24	24	8	21.00	21.00	25	26	25.12	2.38	2.38	14	49
C3R30248HCLO	18P2721	C3RHCLOPK2	C3RHCLOMFK2	30	24	8	27.00	21.00	31	32	25.12	2.38	2.38	14	57

Hinged Cover Lift-Off Enclosures - Type 3R

16x12 and Smaller



16x16 and Large





Quality Products. Service Excellence.

www.hammmfg.com

Hammond Manufacturing Co. Inc.
256 Sonwil Drive
Cheektowaga, New York 14225
Tel: (716) 651-0086
Fax: (716) 651-0726

Hammond Manufacturing Co. Ltd.
394 Edinburgh Road North
Guelph, Ontario N1H 1E5
Tel: (519) 822-2960 or (905) 456-3770
Fax: (519) 822-2301

Les Fabrications Hammond Inc.
4240, Seré
St. Laurent, Quebec H4T 1A6
Tel: (514) 343-9010
Fax: (514) 343-9941